

**KA-BAR® Knives, Inc.**  
Since 1898

*Play It Smart...*

**KEEP YOUR  
KA-BAR SHARP!**

**KA-BAR**  
Since 1898

**HARDCORE KNIVES. HARDCORE LIVES.**

**2014**

**PRODUCT CATALOG**



# You can buy any knife or you can own a **KA-BAR®**.

We wouldn't tell you to buy a KA-BAR® knife because of its military heritage or because it's a legend in the world of knives.  
We wouldn't tell you to buy a KA-BAR® because it comes from an American company with more than a century of knife-making experience.

And we wouldn't tell you to buy a KA-BAR® knife because of its resistance to corrosion, tested strength, unmatched edge-holding ability and out-of-the-box razor sharp blade. Because there's only one real reason to buy a KA-BAR®.

When it comes down to it and you're all alone and your survival depends on a knife, you're going to want a knife you can trust.  
A knife that won't fail you. A knife that has proven itself time and time again. You can buy any knife or you can own a KA-BAR®.



When you see this icon, know that these KA-BARs are being made by family, friends and neighbors right here in the USA.

Leather Handled Fighting/Utility Knives.....	2
Commemorative Fighting/Utility Knives.....	4
KratonG® Handled Fighting/Utility Knives.....	7
Heavy Cutting Tools.....	10
Leather Handled Hunters.....	11
Union & Traditional KA-BAR® Knives.....	12
Stainless Steel All-Purpose Knives.....	15
MULE Folders.....	16
Original Zombie® Knives.....	18
Johnson Adventure® Blades.....	20
Becker Knife & Tool Designs.....	23
TDI Law Enforcement Knives.....	27
Dozier Knife Designs.....	30
Snody Knife Designs.....	32
KA-BAR® Cool Accessories.....	33
Product Specifications .....	34
Glossary of Terms.....	34
Knife Care, Storage & Sharpening.....	40
Warranty Information.....	40





KBD  
MASTER SERIES

BKT KA-BAR

DOZIER  
DESIGN



We are proud of our heritage and continue our legacy with the KBD Master Series. The KBD Master Series is a collection of KA-BAR® manufactured knives designed and authenticated by the leading outdoorsmen, survivalists, uniformed professionals and military experts in the U.S. To see the KBD Master Series and our full product line visit us at [KA-BAR.com](http://KA-BAR.com).



## New! Items for 2014

Looking for the newest KA-BAR® products? We are excited to introduce more than twenty new items to our product line including knives from two new KBD Master Series designers.

### NEW - KBD Master Series TDI/Hinderer

We are proud to offer the TDI/Hinderer knife collection, a series of design collaborations between Tactical Defense Institute President and Chief Instructor, John Benner, and custom knife maker, Rick Hinderer, owner of Hinderer Knives.

Based on their combined experiences as a veteran police Lieutenant and Fire Fighter/EMT, John Benner and Rick Hinderer have designed knives for real-world emergency situations, sure when gripped and ambidextrous for a multitude of mounting and application options.

### NEW - KBD Master Series Mike Snody

We are also proud to offer Snody Knives designed by custom knife maker, Mike Snody. Mike prides himself on producing world-class, investment grade cutlery for the most extreme, discerning and demanding knife collectors and users on the planet.

Snody Boss and Big Boss knives are sold with high-grade, heavy-weight, semi-production JRE sheaths made in the US and featuring grommet holes for lashing in any carry configuration. Snody Snake Charmer comes with a hard plastic self-locking sheath, made in the US.



# KA-BAR® Leather Handled Fighting/Utility Knives

Shortly after the start of World War II, KA-BAR began working with the Marine Quartermaster to design a fighting knife for the United States Marine Corps. Soon, production was under way on the fighting/utility knife that would later make KA-BAR a widely recognized name.

When the war escalated, the demand for the fighting/utility knives became so great that KA-BAR could not keep up. As a result, the government assigned several knife companies to create similar knives for those serving during the War.

Still, KA-BAR's wartime production totaled more than one million knives. The KA-BAR knives became so well recognized for their quality and so abundant that "KA-BAR" became the name by which most referred to this style fighting/utility knife.



Each one of these KA-BARs are being made by family, friends and neighbors right here in Olean, NY.

## Blade Detail



Pile Side Serrations  
USMC 1218 / 5018  
US ARMY 1219 / 5019



### USMC

Blade Length 7"; Overall Length 11-7/8"

#1217\*: 1217S - Leather Sheath

MSRP: \$107.77

#5017: 1216 - Hard Plastic Sheath (MC)

MSRP: \$117.59

### USMC

Blade Length 7"; Overall Length 11-7/8"

#1218\*: 1217S - Leather Sheath

MSRP: \$107.77

#5018: 1216 - Hard Plastic Sheath (MC)

MSRP: \$117.59

### US ARMY

Blade Length 7"; Overall Length 11-7/8"

#1219\*: 1220S - Leather Sheath

MSRP: \$107.77

#5019: 1216 - Hard Plastic Sheath (MC)

MSRP: \$117.59

### US ARMY

Blade Length 7"; Overall Length 11-7/8"

#1220\*: 1220S - Leather Sheath

MSRP: \$107.77

#5020: 1216 - Hard Plastic Sheath (MC)

MSRP: \$117.59

### USN

Blade Length 7"; Overall Length 11-7/8"

#1225\*: 1225S - Leather Sheath

MSRP: \$107.77

#5025: 1216 - Hard Plastic Sheath (MC)

MSRP: \$117.59

### #1250\* USMC Short

Blade Length 5-1/4"; Overall Length 9-1/4"

Sheath: 1250S - Leather

MSRP: \$107.77

### #1251\* USA Short

Blade Length 5-1/4"; Overall Length 9-1/4"

Sheath: 1251S - Leather

MSRP: \$107.77

\* Clam Pack available for these items.

Simply place a "CP" following the item number when ordering.



**1217S/1250S**  
Full Size & Short  
USMC



**1220S**  
Full Size  
US ARMY



**1225S**  
Full Size  
USN



**1216**  
Full Size  
Hard Plastic



**1251S/2217S**  
Short & Big Brother  
USA



**2225S**  
Mark I



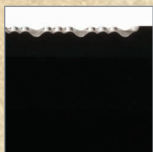
## Sheath Info

The following sheaths are MOLLE compatible:  
1216 / 5016 as noted with a (MC) in the sheath description.

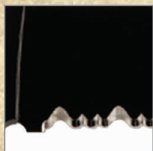
## Blade Detail



Pile Side Serrations  
USMC Short 1252  
USA Short 1261



Top Edge Serrations  
Big Brother 2217



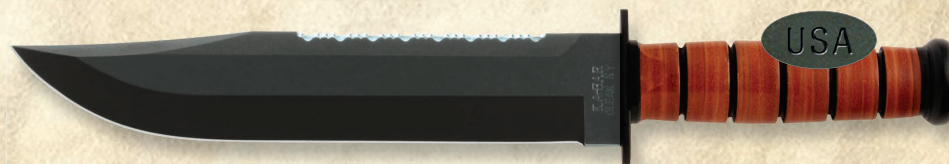
Pile Side Serrations  
Mark I 2226



**#1252\* USMC Short**  
Blade Length 5-1/4"; Overall Length 9-1/4"  
Sheath: 1250S - Leather  
MSRP: \$107.77



**#1261\* USA Short**  
Blade Length 5-1/4"; Overall Length 9-1/4"  
Sheath: 1251S - Leather  
MSRP: \$107.77



**#2217 Big Brother**  
Designed in cooperation with Strategic Edge Impact Global Enterprise (S.E.I.G.E.) of Webster, NY.  
Blade Length 9-3/8"; Overall Length 14-3/8"  
Sheath: 2217S - Leather  
MSRP: \$144.20  
KA-BAR® is unable to ship this item to certain states including CA and MA.



**#2225 Mark I**  
Blade Length 5-1/8"; Overall Length 9-3/8"  
Sheath: 2225S - Leather  
MSRP: \$107.77



**#2226 Mark I**  
Blade Length 5-1/8"; Overall Length 9-3/8"  
Sheath: 2225S - Leather  
MSRP: \$107.77



# KA-BAR® Commemorative Fighting/Utility Knives

KA-BAR® applies gold-colored paint to their standard KA-BAR® knives to create intricately detailed works of art meant to honor and commemorate the men and women in uniform who serve our country. Active-duty and retired military personnel will appreciate the thought and care that goes into each of these collectable pieces.

All commemoratives look stunning on display. Your knife will float gracefully on a desktop inside our Dome Presentation Case. For wall mounting, the Walnut Presentation Case carefully cradles your commemorative between a lockable, hinged glass front and a red velour-lined pillow. If you prefer a less traditional display method, our Excalibur Display keeps your knife at the ready for up-close, hands-on viewing.



Each one of these KA-BARs are being made by family, friends and neighbors right here in Olean, NY.

## Blade Design & Printing Detail



Printed in Gold detail, the custom designed blade art honors those who have and continue to serve our country.



### PRESENTATION GRADE

Blade Length 7"; Overall Length 11-7/8"  
Brass/Gold plated butt cap & guard  
#1215 USMC  
MSRP: \$285.72

### KA-BAR® 115th ANNIVERSARY

Blade Length 7"; Overall Length 11-7/8"  
#9177 US ARMY  
#9178 USMC  
#9179 USN  
MSRP: \$117.80

### OEAF AFGHANISTAN

Blade Length 7"; Overall Length 11-7/8"  
#9168 US ARMY  
#9169 USMC  
#9170 USN  
MSRP: \$117.80

### 9/11 NEVER FORGET

Blade Length 7"; Overall Length 11-7/8"  
#9164 US ARMY  
#9165 USMC  
#9166 USN  
MSRP: \$117.80

### PURPLE HEART

Blade Length 7"; Overall Length 11-7/8"  
#9155 US ARMY  
#9156 USMC  
#9157 USN  
MSRP: \$117.80

### DESERT STORM

Blade Length 7"; Overall Length 11-7/8"  
#9151 US ARMY  
#9152 USMC  
#9153 USN  
MSRP: \$117.80

\* Clam Pack available for these items.

Simply place a "CP" following the item number when ordering.



1217S  
USMC

1220S  
US ARMY

1225S  
USN



## Presentation Displays & Cases

### Excalibur Display

#1429 5" Knife Blade Display

MSRP: \$68.26

Base Dimension: 6" x 8"

Brass plate included for engraving.  
Knife sold separately.



### Dome Presentation Case

#1431 Dome Case

Dimensions: 19" x 6-3/4" x 8"

MSRP: \$107.26

Display any KA-BAR® up to 13".  
Knife sold separately.



### Walnut Presentation Case

Dimensions: 14-7/8" x 5-7/8"

#1437 Presentation Case

MSRP: \$107.26

Display any KA-BAR® up to 13".



### POW / MIA

Blade Length 7"; Overall Length 11-7/8"

#9147 US ARMY

#9148 USMC

#9149 USN

MSRP: \$117.80

### VIETNAM WAR

Blade Length 7"; Overall Length 11-7/8"

#9139 US ARMY

#9140 USMC

#9141 USN

MSRP: \$117.80

### IWO JIMA

Blade Length 7"; Overall Length 11-7/8"

#9137 USMC

#9138 USN

MSRP: \$117.80

### IRAQI FREEDOM

Blade Length 7"; Overall Length 11-7/8"

#9127\* US ARMY

#9128\* USMC

#9131 USN

MSRP: \$117.80

### PEARL HARBOR

Blade Length 7"; Overall Length 11-7/8"

#9108 US ARMY

#9109 USMC

#9110 USN

MSRP: \$117.80

### KOREAN WAR

Blade Length 7"; Overall Length 11-7/8"

#9105 US ARMY

#9106 USMC

MSRP: \$117.80



**"WHETHER NEAR OR FAR -  
ALWAYS BRING  
YOUR KA-BAR"**



**KA-BAR**  
Since 1898

**HARDCORE KNIVES. HARDCORE LIVES.**

**AMERICAN KNIVES HELPING SAVE AMERICAN LIVES!**

## USMC 1217: Our Most Famous Knife

On December 9, 1942, after the start of World War II, KA-BAR submitted a knife to the United States Marine Corps in hopes that it would become general issue to that branch of the military. Working with the Marine Quartermaster Department the original design was revised and production began of an improved fighting and utility knife for the Marines.

As the war escalated, the USMC KA-BAR knives became so well recognized for their quality and so abundant in number that "Kabar" became the name by which many referred to this knife pattern, regardless of whether the knife was manufactured at the actual KA-BAR facility.

The USMC KA-BAR was adopted by not only the Marines, but also the Army, Navy, Coast Guard and Underwater Demolition Teams. Years after World War II, many KA-BAR knives were unofficially reactivated in the Korean, Vietnam, Desert Storm, and Iraqi Freedom conflicts.

Today, the original USMC Fighting and Utility Knife remains the first choice for many men and women of service who carry it as their personal knife option. It is also a favorite of adventurers, survivalists, outdoor sportsmen and, of course, knife collectors who know that this knife deserves a place in their collection.





# KA-BAR® Kraton G® Handled Fighting/Utility Knives

It's tough to argue with the success of the world's most recognizable, time-tested fixed-blade knife so KA-BAR® did what any smart company would do. We didn't change the original design, we expanded upon it.

The high-carbon, non-reflective black blade is epoxy powder-coated and tests prove the finish is more durable than ever. The classic oval shape of the original KA-BAR® remains and has been modernized with Kraton G®, a material nearly impervious to sweat, chemicals, water and wear.



Each one of these KA-BARs are being made by family, friends and neighbors right here in Olean, NY.

## Blade Detail



Pile Side Serrations  
Full Size Black KA-BAR®  
1212 / 1214



Pile Side Serrations  
Tanto 1245



Pile Side Serrations  
Short Tanto  
1255 / 5055



### #1117 KA-BAR® Neck Knife

Blade Length 3-7/8"; Overall Length 7-7/8"  
#1117: 1117S - Hard Plastic Sheath (MC)  
MSRP: \$62.22



### Full Size Black KA-BAR®

Blade Length 7"; Overall Length 11-3/4"  
#1211\*: 1211S - Leather Sheath  
MSRP: \$100.92  
#1213\*: 1216 - Hard Plastic Sheath (MC)  
MSRP: \$106.90



### Full Size Black KA-BAR®

Blade Length 7"; Overall Length 11-3/4"  
#1212\*: 1211S - Leather Sheath  
MSRP: \$100.92  
#1214\*: 1216 - Hard Plastic Sheath (MC)  
MSRP: \$106.90



### #1245\* Tanto

Blade Length 8"; Overall Length: 12-13/16"  
Sheath: 1245S - Hard Plastic (MC)  
MSRP: \$106.90



### Short Tanto

Blade Length 5-1/4"; Overall Length 9-3/8"  
#1254\*: 1256S - Leather Sheath  
MSRP: \$81.05  
#5054: 5016 - Hard Plastic Sheath (MC)  
MSRP: \$86.08



### Short Tanto

Blade Length 5-1/4"; Overall Length 9-3/8"  
#1255\*: 1256S - Leather Sheath  
MSRP: \$81.05  
#5055\*: 5016 - Hard Plastic Sheath (MC)  
MSRP: \$86.08

\* Clam Pack available for these items.  
Simply place a "CP" following the item number when ordering.



# KA-BAR® Kraton G® Handled Fighting / Utility Knives



Each one of these KA-BARs are being made by family, friends and neighbors right here in Olean, NY.

## Blade Detail



Pile Side Serrations  
Short KA-BAR®  
1257 / 1259



Pile Side Serrations  
Fighter 1271



Pile Side Serrations  
D2 Extreme Knives  
1281 / 1282 / 1283



### Short KA-BAR®

Blade Length 5-1/4"; Overall Length 9-1/4"

#1256\*: 1256S - Leather Sheath

MSRP: \$81.05

#1258\*: 5016 - Hard Plastic Sheath (MC)

MSRP: \$86.08

### Short KA-BAR®

Blade Length 5-1/4"; Overall Length 9-1/4"

#1257\*: 1256S - Leather Sheath

MSRP: \$81.05

#1259\*: 5016 - Hard Plastic Sheath (MC)

MSRP: \$86.08

### #1271 Fighter

Blade Length 8"; Overall Length: 12-13/16"

Sheath: 1271S - Leather/Cordura®

MSRP: \$106.90

### #1280 Combat Kukri

Blade Length 8"; Overall Length 13-3/8"

Sheath: 1280S - Heavy-Duty Polyester (MC)

MSRP: \$113.36

### D2 Extreme Knives

Made from .165" D2 tool steel.

Blade Length 7"; Overall Length: 11-7/8"

#1281: 8017S - Nylon/Cordura® (MC)

MSRP: \$188.51

#1282: 1216 - Hard Plastic Sheath (MC)

MSRP: \$181.39

#1283: 1211S - Leather Sheath

MSRP: \$186.83

### #1450CP KA-Fillet

Blade Length 6-3/16"; Overall Length: 10-13/16"

Sheath: 1450S - Hard Plastic

MSRP: \$39.77

### #1451CP KA-Fillet

Blade Length 9-3/16"; Overall Length: 13-3/4"

Sheath: 1451S - Hard Plastic

MSRP: \$42.11

\* Clam Pack available for these items.

Simply place a "CP" following the item number when ordering.

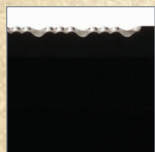




## Sheath Info

The following sheaths are MOLLE compatible: 1117S / 1216 / 1245S / 5016 / 1280S 8017S / 2221S / 5011S as noted with a (MC) in the sheath description.

## Blade Detail



Top Edge Serrations  
Big Brother 2211



Pile Side Serrations  
Mark I 2222



Pile Side Serrations  
Full Size Foliage Green  
5012



### #2211 Big Brother

Designed in cooperation with Strategic Edge Impact Global Enterprise (S.E.I.G.E.) of Webster, NY.  
Blade Length 9-3/8"; Overall Length: 14-3/8"  
Sheath: 2211S - Leather  
MSRP: **\$137.97**  
KA-BAR® is unable to ship this item to certain states including CA and MA.



### #2221 Mark I

Blade Length 5-1/8"; Overall Length: 9-3/16"  
Sheath: 2221S - Hard Plastic (MC)  
MSRP: **\$86.08**



### #2222 Mark I

Blade Length 5-1/8"; Overall Length: 9-3/16"  
Sheath: 2221S - Hard Plastic (MC)  
MSRP: **\$86.08**



### #5011\* Full Size Foliage Green

Blade Length 7"; Overall Length: 11-3/4"  
Sheath: 5011S - Hard Plastic (MC)  
MSRP: **\$106.90**



### #5012\* Full Size Foliage Green

Blade Length 7"; Overall Length: 11-3/4"  
Sheath: 5011S - Hard Plastic (MC)  
MSRP: **\$106.90**



# KA-BAR® Heavy Cutting Tools

With five blade styles to choose from, finding the right tool for chopping brush, clearing a camp site and cutting small tree limbs and branches is just a matter of personal preference.

1248S  
Cutlass  
Machete

1249S  
Kukri  
Machete

1277S  
Large Heavy  
Bowie

1278S  
Heavy Duty  
Warthog

1279S  
Grass Machete



**#1248 Cutlass Machete**  
Blade Length 11"; Overall Length 16-1/2"  
Sheath: 1248S - Leather/Cordura®  
MSRP: \$83.38



**#1249 Kukri Machete**  
Blade Length 11-1/2"; Overall Length: 17"  
Sheath: 1249S - Leather/Cordura®  
MSRP: \$83.38



**#1277 Large Heavy Bowie**  
Blade Length 9"; Overall Length 14-1/4"  
Sheath: 1277S - Leather/Cordura®  
MSRP: \$87.78



**#1278 Heavy Duty Warthog**  
Blade Length 6-3/4"; Overall Length 12-1/4"  
Sheath: 1278S - Leather/Cordura®  
MSRP: \$76.12



**#1279 Grass Machete**  
Blade Length 14"; Overall Length 19-1/2"  
Sheath: 1279S - Cordura®  
MSRP: \$83.38



# KA-BAR® Leather Handled Hunters

These beautifully finished knives feature polished stacked leather handles, stainless steel blades, brass guards and aluminum butt caps and have been a favorite of outdoorsmen since the early 1900's.

1226S  
Little Finn



1232S  
Hunter



1233S  
Skinner



1234S  
Game Hook



1235S  
Marine Hunter



1236S  
Bowie



## Sheath Info

All Leather Handled Hunter sheaths include a plastic liner.



**#1226 Little Finn**  
Blade Length 3-5/8"; Overall Length 7"  
Sheath: 1226S - Leather  
**MSRP: \$44.70**



**#1232 Hunter**  
Blade Length 4"; Overall Length 8-1/8"  
Sheath: 1232S - Leather  
**MSRP: \$51.29**



**#1233 Skinner**  
Blade Length 4-3/8"; Overall Length 8-1/4"  
Sheath: 1233S - Leather  
**MSRP: \$57.30**



**#1234 Game Hook**  
Blade Length 3-1/4"; Overall Length 7-1/4"  
Sheath: 1234S - Leather  
**MSRP: \$54.56**



**#1235 Marine Hunter**  
Blade Length 5-7/8"; Overall Length 10-3/4"  
Sheath: 1235S - Leather  
**MSRP: \$66.07**



**#1236 Bowie**  
Blade Length 6-15/16"; Overall Length 11-13/16"  
Sheath: 1236S - Leather  
**MSRP: \$72.17**



# KA-BAR® Union and Traditional Knives

Uniquely jigged bone, expertly finished Ram's Horn and rare, reclaimed American Chestnut has been buffed smooth and shiny for handles that feel as good as they look. The Coppersmith knives feature attractive copper bolsters and Dog's Head shields that will only add character to the knives as they patina.



Each one of these KA-BARs are being made by family, friends and neighbors right here in the USA.

**#3211**  
**KA-BAR® Dog's Head 2-Blade Trapper**  
 Blade Length 3-1/8"; Open Length 7-3/8"  
 Handle: Reclaimed American Chestnut  
 MSRP: \$129.61

**#3313 - KA-BAR® Dog's Head 3-Blade Stockman**  
 Blade Length 3"; Open Length 6-7/8"  
 Handle: Reclaimed American Chestnut  
 MSRP: \$167.39

**#3576 - KA-BAR® Dog's Head Trailing Point Hunter**  
 Blade Length 3-1/2"; Open Length 7-3/4"  
 Handle: Reclaimed American Chestnut  
 Sheath: 3576S - Leather  
 MSRP: \$182.49

**#6110**  
**Union Cutlery Dog's Head Swing Guard**  
 Blade Length 4-1/4"; Open Length 9-1/2"  
 Handle: Roofline Licorice Jigged Bone  
 MSRP: \$350.00



**New!**

**NEW #6111CU KA-BAR® Dog's Head Coppersmith Trapper**  
 Blade Length 3-1/16"; Open Length 6-7/8"  
 Handle: Bone  
 MSRP: \$114.74

**#6112CU KA-BAR® Dog's Head Coppersmith Lockback, Small**  
 Blade Length 3"; Open Length 6-3/4"  
 Handle: Bone  
 MSRP: \$140.35

**NEW #6123CU KA-BAR® Dog's Head Coppersmith Wharncliffe Barlow**  
 Blade Length 2-1/2"; Open Length 5-11/16"  
 Handle: Bone  
 MSRP: \$124.19

**#6199CU KA-BAR® Dog's Head Coppersmith Lockback, Large**  
 Blade Length 3-1/2"; Open Length 8-5/8"  
 Handle: Bone  
 MSRP: \$189.12

**New!**



3576S  
Trailing Point  
Hunters



6476S  
Pig Sticker



**NEW #6211CU KA-BAR® Dog's Head Coppersmith 2-Blade Folding Trapper**  
Blade Length 3-1/8"; Open Length 7-3/8"  
Handle: Bone  
MSRP: \$146.85

**#6250 Union Razor Co. Elephant Toe**  
Blade Length 3"; Open Length 7-3/16"  
Handle: Antique Brown  
Worm Groove Bone  
MSRP: \$275.00

**NEW #6313CU KA-BAR® Dog's Head Coppersmith 3-Blade Stockman**  
Blade Length 3"; Open Length 6-7/8"  
Handle: Bone  
MSRP: \$177.10

**#6476 - Union Razor Co. Pig Sticker**  
Blade Length 5-7/8"; Overall Length 10-1/4"  
Handle: Antique Brown  
Worm Groove Bone  
Sheath: 6476S - Leather  
MSRP: \$250.00



#6211CU

New!



#6250



#6313CU

New!



#6576CU

New!

**NEW #6576CU - KA-BAR® Dog's Head Coppersmith Trailing Point Hunter**  
Blade Length 3-1/2"; Overall Length 7-3/4"  
Handle: Antique Brown  
Worm Groove Bone  
Sheath: 3576S - Leather  
MSRP: \$192.21



#8111

**#8111 KA-BAR® Dog's Head Trapper**  
Blade Length 3-1/16"; Open Length 6-7/8"  
Handle: Ram's Horn  
MSRP: \$121.87



#8112

**#8112 KA-BAR® Dog's Head Lockback**  
Blade Length 3-1/16"; Open Length 6-7/8"  
Handle: Ram's Horn  
MSRP: \$148.30



#6476



*Be prepared to fight back.  
In case of an ATTACK!*



**KA-BAR KNIVES**

**A FISTFUL OF QUALITY  
SINCE 1898**

**KA-BAR**

Since 1898

**HARDCORE KNIVES. HARDCORE LIVES.**

**“K a bar”**

How KA-BAR®  
Got Its Name

We've been making knives since 1898 and each knife undergoes our unique manufacturing processes and testing to ensure corrosion resistance, strength, edge holding ability, and an out-of-the-box razor sharp cutting edge.

Our name dates back to the early 1900's from a fur trapper testimonial. He wrote that while trapping, his gun jammed leaving him with only his knife to kill a wounded bear that was attacking him. He thanked us for making the quality knife that helped him to kill a bear, but all that was legible was “K a bar”. Honored by the testimonial, the company adopted the phrase KA-BAR as their trademark.



# KA-BAR® Stainless Steel All-Purpose Knives

Whether you're looking for an inexpensive groomsman's gift, stocking stuffers for those near and dear, or a personal defense knife to protect a friend or family member, these fully warrantied stainless steel knives will serve you well.



## Blade Detail



Blade Serrations  
Warthog Folder 3073



Blade Serrations  
Warthog Tanto Folder 3075

### #1300 Original Hobo

**#1301 Original Hobo** - Clam Pack  
Fork, knife and spoon - pieces come apart  
Blade Length 3"; Open Length 6-5/8"  
Sheath: 1300S - Nylon  
MSRP: \$27.38



**#3030BP Besh BOGA: Back Off Get Away**  
Includes two arm bands & neck cord.  
Blade Length 2-3/16"; Overall Length 5-1/2"  
Sheath: Hard Plastic with metal clip  
MSRP: \$23.27



\* Clam Pack available for these items.  
Simply place a "CP" following the item number when ordering.



New!

**#3072\* Warthog Folder**  
Blade Length 3"; Open Length 7-9/16"  
Handle: G10  
MSRP: \$19.28



New!

**#3073\* Warthog Folder**  
Blade Length 3"; Open Length 7-9/16"  
Handle: G10  
MSRP: \$19.28



New!

**#3074\* Warthog Tanto Folder**  
Blade Length 3"; Open Length 7-9/16"  
Handle: G10  
MSRP: \$19.28



New!

**#3075\* Warthog Tanto Folder**  
Blade Length 3"; Open Length 7-9/16"  
Handle: G10  
MSRP: \$19.28



**#3076 Agama Folder**  
Blade Length 3-5/8"; Open Length 8-1/2"  
Handle: G10  
MSRP: \$22.60



**#3077 Gila Folder**  
Blade Length 3-7/8"; Open Length 8-7/8"  
Handle: G10  
MSRP: \$22.60



**#3078 Komodo Folder**  
Blade Length 3-1/2"; Open Length 7-7/8"  
Handle: G10  
MSRP: \$22.60



**#3079 Tegú Folder**  
Blade Length 2-7/8"; Open Length 6-7/8"  
Handle: G10  
MSRP: \$22.60



# KA-BAR® MULE and G10 MULE Folders

These heavy-duty lockback folders are the folding knife's answer to a rugged fixed-blade utility knife. The original MULE Folders are sturdy all-purpose lockback knives made with black, desert-colored or toxic green Zytel® handles that feature black Kraton® inserts for an extra sure grip.

## Blade Detail



Blade Serrations  
Black MULE 3051



Blade Serrations  
Desert MULE 3053



Blade Serrations  
Zombie® MULE 3059

## Pocket Clip

All MULE and G10 MULE Folders feature a reversible pocket clip.



\* **Clam Pack** available for these items.  
Simply place a "CP" following the item number when ordering.



**#3050\* Black MULE**  
Blade Length 3-7/8"; Open Length 9-1/8"  
Handle: Zytel®  
Sheath: 3050S - Black Polyester  
MSRP: **\$72.06**



**#3051\* Black MULE**  
Blade Length 3-7/8"; Open Length 9-1/8"  
Handle: Zytel®  
Sheath: 3050S - Black Polyester  
MSRP: **\$72.06**



**#3053\* Desert MULE**  
Blade Length 3-7/8"; Open Length 9-1/8"  
Handle: Zytel®  
Sheath: 3052S - Desert Polyester  
MSRP: **\$72.06**



**#3058\* Zombie® MULE**  
Blade Length 3-7/8"; Open Length 9-1/8"  
Handle: Zytel®  
Sheath: 3058S - Black Polyester  
MSRP: **\$72.06**



**#3059\* Zombie® MULE**  
Blade Length 3-7/8"; Open Length 9-1/8"  
Handle: Zytel®  
Sheath: 3058S - Black Polyester  
MSRP: **\$72.06**

*Be prepared* and check out the complete  
Original Zombie® line on pages 18/19.





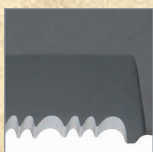
3050S Polyester Black

3052S Polyester Desert

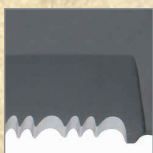
3058S Polyester Zombie\*



## Blade Detail



Blade Serrations  
G10 MULE 3063



Blade Serrations  
G10 MULE 3065



New!

### #3062 G10 MULE

Blade Length 3-15/16"; Open Length 9-1/4"

Handle: G10

MSRP: \$37.31



New!

### #3063 G10 MULE

Blade Length 3-15/16"; Open Length 9-1/4"

Handle: G10

MSRP: \$37.31



New!

### #3064 G10 MULE

Blade Length 3-15/16"; Open Length 9-1/4"

Handle: G10

MSRP: \$37.31



New!

### #3065 G10 MULE

Blade Length 3-15/16"; Open Length 9-1/4"

Handle: G10

MSRP: \$37.31



# KA-BAR® Original Zombie® Knives

In an ever-changing world, the need for preparedness has never been greater. Without notice the game can change and the rules no longer apply. Questioning your gear at a crucial moment is not an option. Whether setting up camp or securing your perimeter, the Original Zombie® Knives are designed to perform under the most rigorous, unexpected and apocalyptic situations. ***Are you prepared?***

## Blade Detail



Blade Serrations  
Zombie® MULE 3059



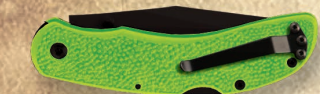
Pile Side Serrations  
Zombie® Famine Tanto 5700

## Pocket Clip

Zombie® MULE Folders feature a reversible pocket clip.



Zombie® Kharon Tanto Folder features a reversible pocket clip.



### #3058\* Zombie® MULE Folder

Blade Length 3-7/8"; Open Length 9-1/8"

Handle: Zytel®

Sheath: 3058S - Black Polyester

MSRP: \$72.06



### #3059\* Zombie® MULE Folder

Blade Length 3-7/8"; Open Length 9-1/8"

Handle: Zytel®

Sheath: 3058S - Black Polyester

MSRP: \$72.06



### #5698\*

#### Zombie® "Kharon" Tanto Folder

Blade Length 3-3/8"; Open Length 7-7/8"

Handle: GFN-PA66

MSRP: \$45.18



### #5699BP

#### Zombie® "Acheron" Skeleton Knife

Blade Length 3-1/8"; Overall Length 6-3/8"

Sheath: 5699S - Hard Plastic

MSRP: \$12.88



### #5700\* Zombie® "Famine" Tanto

Blade Length 7-1/2"; Overall Length 13"

Sheath: 5700S - Nylon/Front Stuff Sack (MC)

MSRP: \$148.23

Bonus: #5699 (knife only) & Black Handles Included



### #5701 Zombie® "War" Sword

Blade Length 9-11/16"; Overall Length 15-1/4"

Sheath: 5701S - Nylon/Front Stuff Sack (MC)

MSRP: \$148.23

Bonus: #5699 (knife only) & Black Handles Included

\* Clam Pack available for these items.

Simply place a "CP" following the item number when ordering.

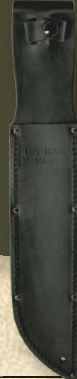


3058S  
Polyester Zombie®

5699S  
Acheron

5700S / 5701S  
5705S / 5706S  
Nylon with  
Front Stuff Sack

2211S  
Zombro

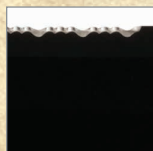


## Sheath Info

The following sheaths are MOLLE compatible:  
5700S / 5701S / 5705S / 5706S as noted with  
a (MC) in the sheath description.



## Blade Detail



Top Edge Serrations  
Zombie® Big Brother 2212

## Zombie® Extras

**Bonus Blade - #5699** The Zombie® Acheron Skeleton (knife only) is included with the following fixed blade styles: 5700 / 5701 / 5702 / 5705 / 5706



**Bonus Set of Handles - Black**  
Zombie® Knives 5700 / 5701  
5702 / 5705 / 5706 are mounted  
with green handles and include  
an extra set of interchangeable  
black handles.



**#5702**  
**Zombie® "Pestilence" Chopper**  
Blade Length 10-3/16"; Overall Length 15-3/4"  
Sheath: 5701S - Nylon/Front Stuff Sack (MC)  
**MSRP: \$148.23**  
Bonus: #5699 (knife only) & Black Handles Included



**#5705** **Zombie® "Zomstro"**  
Blade Length 9-3/4"; Overall Length 15-1/2"  
Sheath: 5705S - Nylon/Front Stuff Sack (MC)  
**MSRP: \$172.12**  
Bonus: #5699 (knife only) & Black Handles Included



**#5706** **Zombie® "Swabbie"**  
Blade Length 12-1/2"; Overall Length 18"  
Sheath: 5706S - Nylon/Front Stuff Sack (MC)  
**MSRP: \$172.12**  
Bonus: #5699 (knife only) & Black Handles Included



**New!**

**#2212** **Zombie® "Zombro"**  
Designed in cooperation with Strategic Edge Impact  
Global Enterprise (S.E.I.G.E.) of Webster, NY.  
Blade Length 9-3/8"; Overall Length 14-3/8"  
Sheath: 2211S - Leather  
**MSRP: \$137.97**  
KA-BAR® is unable to ship this item  
to certain states including CA and MA.



# KBD Master Series® Johnson Adventure® Blades

An industrial engineer by training, Steve Johnson developed an interest in metallurgy and knife-making as a young boy and began making hand-made pieces for friends. He teamed up with KA-BAR® a couple years back and today we offer eight Johnson Adventure® Blades through the KA-BAR® Master Series.

## Pocket Clip

All Adventure® Folders feature a reversible pocket clip.



## Adventure® Extras

### Bonus Blade - #5599

The Adventure® Piggyback® (knife only) is included with the following fixed blade styles: 5600 / 5601

### Bonus 550 Cord

Extra 550 cord is included with the following styles: 5600 / 5601 / 5602 / 5603 / 5604



**#5597\***  
**Adventure® Piggyback® Folder**  
Blade Length 3-3/8"; Open Length 7-7/8"  
**MSRP: \$45.18**



**#5598\***  
**Adventure® Baconmaker® Folder**  
Blade Length 3-3/8"; Open Length 7-7/8"  
**MSRP: \$45.18**



**#5599BP Adventure® Piggyback®**  
Blade Length 2-5/8"; Overall Length 6"  
Sheath: 5599S - Hard Plastic  
**MSRP: \$12.88**



**#5600\* Adventure® Potbelly®**  
Blade Length 7-1/4"; Overall Length 12-3/4"  
Made from 0.25" 1095 Cro-Van steel  
Sheath: 5600S - Heavy-Duty Polyester with Front Stuff Sack (MC)  
**MSRP: \$155.64**  
Bonus: #5599 (knife only) Included

\* Clam Pack available for these items.  
Simply place a "CP" following the item number when ordering.



5599S  
Piggyback®



5600S / 5601S  
Heavy Duty  
Polyester



5602S  
Gamestalker®  
& Wharnstalker



5603S  
Parangatang



## Sheath Info

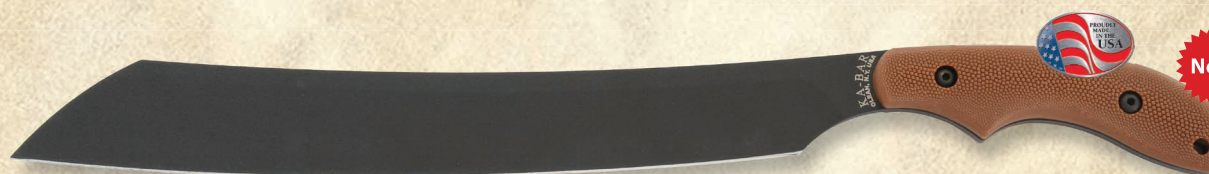
The following sheaths are MOLLE compatible:  
5600S / 5601S / 5602S / 5603S as noted with  
a (MC) in the sheath description.



**#5601\* Adventure® Baconmaker®**  
Blade Length 7-1/4"; Overall Length 12-3/4"  
Made from .188" 1095 Cro-Van steel  
Sheath: 5601S - Heavy-Duty Polyester  
with Front Stuff Sack (MC)  
**MSRP: \$148.23**  
Bonus: #5599 (knife only) Included



**#5602 Adventure® Gamestalker®**  
Blade Length 4-1/16"; Overall Length 8"  
Made from .188" 440A stainless steel  
Sheath: 5602S - Brown Nylon (MC)  
**MSRP: \$75.33**

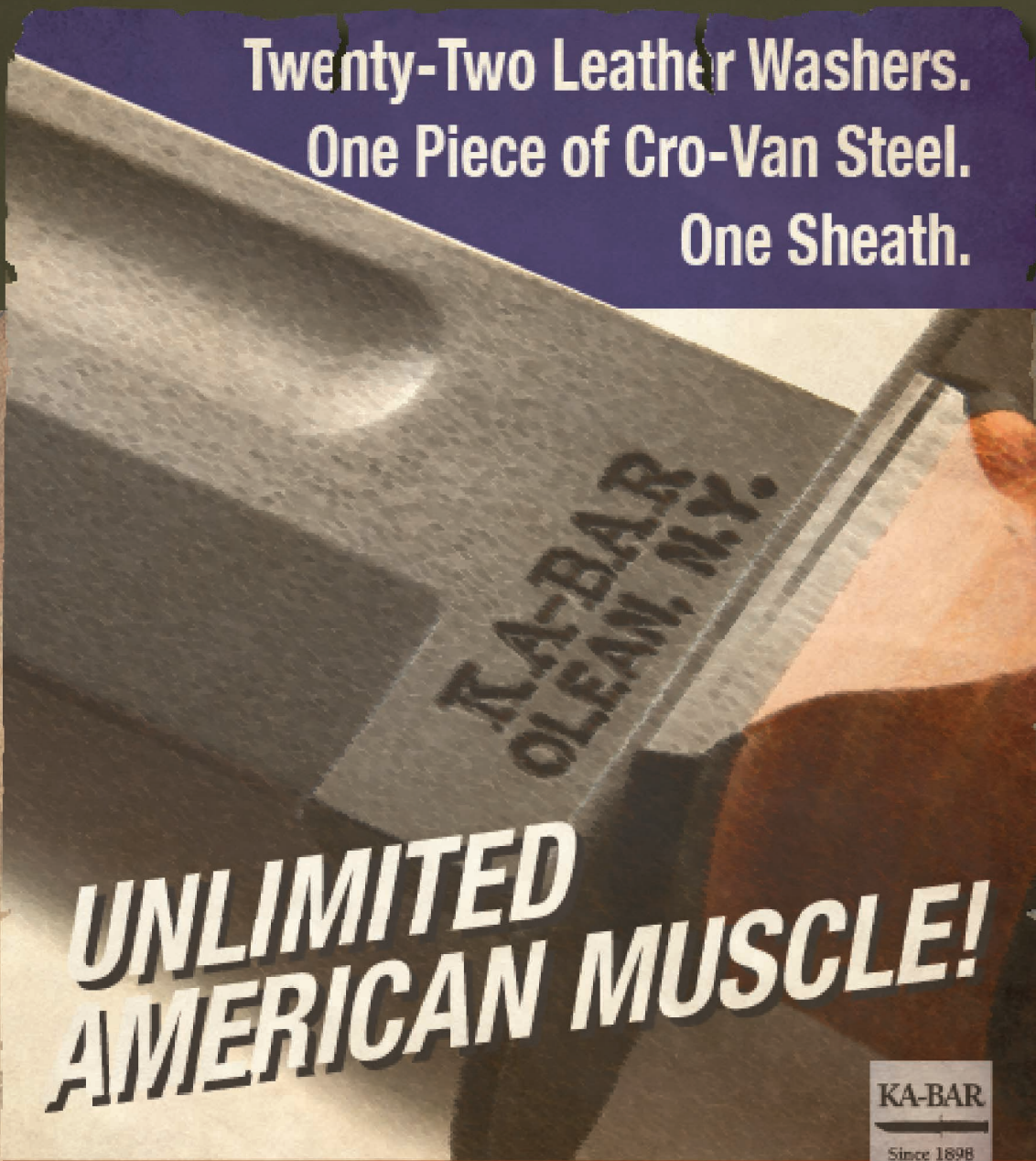


**New!** **#5603\* Adventure® Parangatang**  
Blade Length 14-1/8"; Overall Length 19-5/8"  
Made from .188" 1095 Cro-Van steel  
Sheath: 5603S - Tan Cordura® (MC)  
**MSRP: \$155.63**



**New!** **#5604\* Adventure® Wharnstalker**  
Blade Length 4-3/32"; Overall Length 8"  
Made from .188" 440A stainless steel  
Sheath: 5602S - Brown Nylon (MC)  
**MSRP: \$75.33**





Twenty-Two Leather Washers.  
One Piece of Cro-Van Steel.  
One Sheath.

**UNLIMITED  
AMERICAN MUSCLE!**

KA-BAR

Since 1898

**HARDCORE KNIVES. HARDCORE LIVES.**

## KA-BAR® The Making of a Legend

### Blanking

Blanking is a shearing process in which the blade of a knife is punched out of a larger piece of metal. Using a 100 ton blanking press, KA-BAR can blank out nearly 9,000 knife blades in one full day of operation.

### Tang Stamping

After blanking out the blades, tang stamping is used to identify the knife. The manufacturer's name, the country in which the product is made, and an item number are stamped into the blade of the knife.

### Heat-Treating Oven

In the first phase of our well known heat treatment process, blades are run through a heat treating belt oven. This 70 foot conveyor oven is one of the largest in the country and takes a full hour to complete one cycle.

### Tempering

In the final phase of heat treatment process, blades are tempered in a walk-in oven for several hours, enhancing steel toughness.

### Grinding

KA-BAR knives feature flat or hollow ground blades. Flat grinds are best for jobs with which there will be great lateral stress. Hollow grinds provide a fine, extremely sharp edge perfect for more delicate tasks.

### Cap/Pin Assembly

The butt cap or pommel is attached to the handle of a knife with a headed steel pin. The pin is inserted into the butt cap and driven part way through the tang.

### Inspection

Finally before being released for shipping, each KA-BAR knife is subject to a multiple step inspection guaranteeing the ergonomics, aesthetics, & functionality.



# KBD Master Series® Becker Knife & Tool Designs

Ethan Becker founded Becker Knife & Tool in the early 1980's and set about designing, manufacturing and selling the industrial-strength tactical and survival knives that he had always wanted for himself. His products, the BK&T line, have gone a long way to making these now popular all-black knives in demand.

Mr. Becker spends as much time as possible in the outdoors testing a variety of equipment and knife designs, and also works to expand his primitive and outdoor skills. He collaborated with KA-BAR® in 2008 to reintroduce and update his best selling models and together we continue to design new models to expand the line.



Each one of these KA-BARs are being made by family, friends and neighbors right here in Olean, NY.

## Blade Detail



Pile Side Serrations  
Becker Tac Tool - BK3

## BK&T Fastener Info

The standard fastener sizes for the handles of the large Becker knives are as follows:

Cap Screws: 10 - 32x5/8"

Nuts: 10 - 32

The Allen Wrench used would be either a 5/32 or 4mm.

For the Short Becker knives, the size of the wrench is 9/64th.

The size of replacement bolts are #8 x 32 x 1/2"

and the nuts are #8 x 32



### Becker Companion

Blade Length 5-1/4"; Overall Length 10-1/2"

Made from 0.25" 1095 Cro-Van steel

#BK2: BK2S - Hard Plastic Sheath

MSRP: \$123.54

#BK22: BK22S - Heavy-Duty Polyester with front pocket (MC)

MSRP: \$127.52



### #BK3 Becker Tac Tool

Blade Length 7"; Overall Length 12-1/2"

Made from 0.25" 1095 Cro-Van steel

Chisel ground with wire cutter

Sheath: BK3S - Hard Plastic (MC)

MSRP: \$167.14



### #BK4 Becker Machax

Blade Length 9-3/8"; Overall Length 14-11/16"

Made from 0.188" 1095 Cro-Van steel

Sheath: BK4S - Heavy-Duty Polyester with front pocket (MC)

MSRP: \$142.45



### #BK5 Becker Magnum Camp

Blade Length 8"; Overall Length 13-1/2"

Made from 0.188" 1095 Cro-Van steel

Sheath: BK7S - Heavy-Duty Polyester with front pocket (MC)

MSRP: \$141.16



# KBD Master Series® Becker Knife & Tool Designs



Each one of these KA-BARs are being made by family, friends and neighbors right here in Olean, NY.

**BK&T KA-BAR**

**BK&T** BECKER KNIVES  
"Work for a living"

OLEAN, NY USA • KA-BAR.com

## Handles

### #BK77HNDL Becker Handle Kit - Full Size

Green canvas Micarta® handle set for full size Becker knives.

MSRP: \$40.00



### #BK11HNDL Becker Handle Kit - Neckers

Green canvas Micarta® handle set for Becker Neckers.

MSRP: \$30.00



### #BK14HNDL Becker Handle Kit - Eskabars

Kit includes one set each Black & Blaze Orange Zytel® handles for Becker Eskabars.

MSRP: \$16.37



### #BK16HNDL Becker Handle Kit - Short Becker Knives

Green canvas Micarta® handle set for Short Becker knives.

MSRP: \$35.00



### #BK7 Becker Combat Utility Knife

Blade Length 7"; Overall Length 12-3/4"

Made from 0.188" 1095 Cro-Van steel

Sheath: BK7S - Heavy-Duty Polyester with Front Pocket (MC)

MSRP: \$137.99



### #BK9 Becker Combat Bowie Knife

Blade Length 9-1/4"; Overall Length 14-3/4"

Made from 0.188" 1095 Cro-Van steel

Sheath: BK9S Heavy-Duty Polyester with Front Pocket (MC)

MSRP: \$155.63



### #BK10 Becker Crewman

Blade Length 5-1/2"; Overall Length 11"

Made from 0.188" 1095 Cro-Van steel

Sheath: BK10S - Heavy-Duty Polyester with Front Pocket (MC)

MSRP: \$127.52



### #BK11\* Becker Necker

Blade Length 3-1/4"; Overall Length 6-3/4"

Made from 0.165" 1095 Cro-Van steel

Sheath: BK11S - Hard Plastic/550 cord (MC)

MSRP: \$65.33



### #BK13CP Becker Remora

Blade Length 2-3/8"; Overall Length 5-1/8"

Made from 0.125" 440 stainless steel

Sheath: BK13S - Hard Plastic

MSRP: \$36.34





## Sheath Info

The following sheaths are MOLLE compatible:  
BK22S / BK3S / BK4S / BK7S / BK9S / BK10S / BK11S  
BK15S as noted with a (MC) in the sheath description.

## Belt Clip

The Becker Necker, Eskabar and D'Eskabar sheaths are designed to work with the TDI Metal Belt Clip - #1480CLIP, sold separately.

**#1480CLIP**  
TDI Metal Belt Clip  
MSRP: \$11.50



## BK&T Extras

**Bonus Set of Handles - Green**  
BK15 / BK16 / BK17 are mounted with Black handles and include an extra set of interchangeable Green handles.



\* Clam Pack available for these items.  
Simply place a "CP" following the item number when ordering.



**#BK14\* Becker Eskabar**  
Blade Length 3-1/4"; Overall Length 7"  
Made from 0.165" 1095 Cro-Van steel  
Sheath: BK11S - Hard Plastic (MC)  
MSRP: \$65.33



**#BK15 Short Becker Trailing Point**  
Blade Length 5-9/16"; Overall Length 10-3/8"  
Sheath: BK15S - Cordura\* (MC)  
MSRP: \$118.50  
Bonus: Extra Set of Handles Included



**#BK16 Short Becker Drop Point**  
Blade Length 4-3/8"; Overall Length 9-1/4"  
Sheath: BK15S - Cordura\* (MC)  
MSRP: \$118.50  
Bonus: Extra Set of Handles Included



**#BK17 Short Becker Clip Point**  
Blade Length 4-3/8"; Overall Length 9-1/4"  
Sheath: BK15S - Cordura\* (MC)  
MSRP: \$118.50  
Bonus: Extra Set of Handles Included



**#BK24\* D'Eskabar**  
Blade Length 3-1/4"; Overall Length 7"  
Sheath: BK11S - Hard Plastic (MC)  
MSRP: \$83.51



**A dull knife is a dangerous knife:**

**Do your part  
and Keep your  
KA-BAR sharp!**

**KA-BAR**

Since 1898

**HARDCORE KNIVES. HARDCORE LIVES.**

## Care & Storage of Your KA-BAR®

### Caring for your KA-BAR®

Wipe blades after use with a dry, soft cloth. If knives are exposed to salt water, wash with mild dish detergent, rinse with tap water, then wipe with a dry, soft cloth.

### Storing

Treat blade with a light coating of mineral oil before storing in a dry area separate from its sheath. If possible, store in paper sleeve provided with the knife at purchase.

### Sharpening

Keep knives sharp by touching up edges as needed. Most KA-BAR® knives can be sharpened using an Arkansas stone or commonly available sharpening system. Most knives can easily be touched up using a coarse or hard stone.

When bringing back a very dull edge a coarse or hard stone should be used first, followed by a finer, softer stone.

Knives made with D2 steel require diamond or ceramic sharpeners. Knives should at no time be sharpened on a belt sander or bench grinder. These machines ruin a factory-sharpened edge.



# KBD Master Series® TDI Law Enforcement Knives

The Original TDI Knife was designed by John Benner, founder of Tactical Defense Institute. Designed by an officer with officers in mind, TDI fixed-blade knives are meant to be worn at the off hand and draw like a pistol.

In extreme close quarters where a suspect is attempting to take an officer's handgun, the TDI fixed-blades are available as a last defense option. Coupled with friction sheaths, the units easily mount on an officer's pant belt and conceal behind the various gear worn on his duty belt.

Single hand opening, non-automatic, ambidextrous, folding knives are low profile and lightweight and there to meet your specific law enforcement needs.



## Blade Detail



Blade Serrations  
Original TDI Half-Serrated  
1477CB / 1477FG



Blade Serrations  
Original TDI Serrated 1481

## TDI Belt Clip

Fits all TDI and TDI/Hinderer fixed blade knives except 1478BP. Also fits Becker Necker (BK11), Eskabar (BK14) & D'Eskabar (BK24) #1480CLIP sold separately.

**#1480CLIP**  
**TDI Metal Belt Clip**  
**MSRP: \$11.50**



### Original TDI Half-Serrated

Blade Length 2-5/16"; Overall Length 5-5/8"  
Sheath: 1477S - Hard Plastic/Belt Clip  
**#1477CB\***  
Color: Coyote Brown  
**#1477FG\***  
Color: Foliage Green  
**MSRP: \$61.38**

### #1478BP Last Ditch Knife

1478BP Sheath & Boot Application Shown.  
Blade Length 1-5/8"; Overall Length 3-5/8"  
Sheath: Hard Plastic  
**MSRP: \$20.94**

### #1480\* Original TDI

Blade Length 2-5/16"; Overall Length 5-5/8"  
Color: Black  
Sheath: 1480S - Hard Plastic/Belt Clip  
**MSRP: \$61.38**

### #1481\* Original TDI Serrated

Blade Length 2-5/16"; Overall Length 5-5/8"  
Color: Black  
Sheath: 1480S - Hard Plastic/Belt Clip  
**MSRP: \$61.38**

\* Clam Pack available for these items.  
Simply place a "CP" following the item number when ordering.



# KBD Master Series® TDI Law Enforcement Knives

## TDI / Hinderer Knives

We are proud to offer the TDI/Hinderer knife collection, a series of design collaborations between Tactical Defense Institute President and Chief Instructor, John Benner, and custom knife maker, Rick Hinderer, owner of Hinderer Knives.

Based on their combined experiences as a veteran police Lieutenant and Fire Fighter/EMT, John Benner and Rick Hinderer have designed knives for real-world emergency situations, sure when gripped and ambidextrous for a multitude of mounting and application options.

### Blade Detail



Blade Serrations  
Large TDI 1482



Blade Serrations  
Large TDI Tanto  
1485 / 1485FG

#### #1490 TDI Fanny Pack

Heavy-duty black polyester carry-all pack accommodates up to a full-size firearm, plus still has room for your knife, magazines and badge. Fits up to a 42" waist.

MSRP: \$45.54



#### #1482 Large TDI

Blade Length 3-11/16"; Overall Length 7-9/16"

Color: Black

Sheath: 1482S - Hard Plastic/Velcro® Straps (MC)

MSRP: \$72.50



#### #1483 Large TDI

Blade Length 3-11/16"; Overall Length 7-9/16"

Color: Black

Sheath: 1482S - Hard Plastic/Velcro® Straps (MC)

MSRP: \$72.50



#### Large TDI Tanto

Blade Length 3-11/16"; Overall Length 7-9/16"

Sheath: 1482S - Hard Plastic/Velcro® Straps (MC)

#1485

Color: Black

#1485FG\*

Color: Foliage Green

MSRP: \$72.50



#### #9406 TDI Self Defense Cane

Overall Length 39" - 0.100 thick 5052-H32

Aluminum Cane can be cut shorter for fit.

Color: Black

MSRP: \$122.80

\* Clam Pack available for these items.

Simply place a "CP" following the item number when ordering.



**1482S**

Large TDI Knives include  
Hard Plastic Sheath with  
Velcro® Straps

**1477S/1480S**

Original TDI Knives include  
Hard Plastic Sheath with  
Metal Belt Clip

**2484S**

Master Key

**2485S / 2486S**

TDI / Hinderer Knives include  
Locking Hard Plastic Sheath  
with Metal Belt Clip



## Sheath Info

The following sheaths are MOLLE compatible:  
1482S / 2484S as noted with a (MC) in the  
sheath description.



## Blade Detail



Blade Serrations  
TDI Folder 2483

**#1491 TDI Courier Pack**

Heavy-duty black polyester pack. Fitted with MOLLE loops that accommodate most gun holsters and your TDI knife. Still enough room for important papers, gym gear, and other daily necessities.

**MSRP: \$45.54**

**#1492 TDI Vest**

**MSRP: \$70.17**

Features a right chest pocket with pen holder and two reinforced waist pockets for discreet carry of weapons, all snap closure. Inside you will find a right chest pocket with Velcro® closure and two more waist pockets for additional conceal carry options. Three front brass snap closures.

**#1492-L Fits Chest Size 42-44**

**#1492-XL Fits Chest Size 46-48**

**#1492-XXL Fits Chest Size 50-52**

**#2482 TDI Folder**

Blade Length 3-5/8"; Open Length 7-1/2"

Color: Black

Handle: G10

**MSRP: \$45.55**

Bonus: Features reversible pocket clip

**#2483 TDI Folder**

Blade Length 3-5/8"; Open Length 7-1/2"

Color: Black

Handle: G10

**MSRP: \$45.55**

Bonus: Features reversible pocket clip

**#2484 TDI Law Enforcement Master Key**

Blade Length 4"; Overall Length 13"

Made from 0.25" 1095 Cro-Van steel

Sheath: 2484S - Hard Plastic (MC)

Color: Black

**MSRP: \$93.57**



**New!**

**#2485 TDI/Hinderer "Hinderance"**

Blade Length 3-9/16"; Open Length 7-1/4"

Color: Black

Sheath: 2485S - Locking Hard Plastic/Belt Clip

**MSRP: \$111.56**



**New!**

**#2486 TDI/Hinderer "Hell Fire"**

Blade Length 3-9/16"; Open Length 7-1/4"

Color: Black

Sheath: 2486S - Locking Hard Plastic/Belt Clip

**MSRP: \$111.56**



# KBD Master Series® Dozier Knife Designs

Bob Dozier has been hand-crafting knives for more than 50 years. The clean lines of his designs add aesthetic appeal to some very utilitarian cutting tools. In 2001 Bob teamed up with KA-BAR® and his factory-made pieces have been a staple to the line ever since.

1275S

Bull Dozier



## Clips

All Dozier folders feature a reversible pocket clip.



**#1275S Bull Dozier Fixed Blade**  
Blade Length 6-1/2"; Overall Length 12-1/8"  
Sheath: 1275S - Hard Plastic  
MSRP: \$127.74



**#4062\* Folding Hunter**  
Blade Length 3"; Open Length 7-1/4"  
Color: Black  
MSRP: \$31.12  
All 4062's Feature a Reversible Thumb Stud



**#4062BO**  
Color: Blaze Orange  
MSRP: \$31.12



**#4062CB\***  
Color: Coyote Brown  
MSRP: \$31.12



**#4062FG\***  
Color: Foliage Green  
MSRP: \$31.12



**#4062PK\***  
Color: Pink  
MSRP: \$31.12



**#4062ZG\***  
Color: Zombie® Green  
MSRP: \$31.12

\* Clam Pack available for these items.  
Simply place a "CP" following the item number when ordering.





## Dozier His/Her Combo Pack

### #9472 Dozier His/Her Combo Pack

Blade Length 2-1/4"; Open Length 5-3/4"

Includes one of each:

#4072PK

#4072ZG

MSRP: \$48.18



### #4084 "Big Easy" Slip Joint Folder

Blade Length 3-1/2"; Open Length 8"

Handle: Brown Canvas Micarta®

MSRP: \$53.15



### #4065\* Folding Thumb Notch

Blade Length 3"; Open Length 7-1/4"

Color: Black

MSRP: \$31.12



### #4065BO

Color: Blaze Orange

MSRP: \$31.12



### #4065PK

Color: Pink

MSRP: \$31.12



### #4065ZG

Color: Zombie® Green

MSRP: \$31.12



### #4072 Mini Dozier Folder

Blade Length 2-1/4"; Open Length 5-3/4"

Color: Black

MSRP: \$26.50

All 4072's Feature a Reversible Thumb Stud



### #4072BO

Color: Blaze Orange

MSRP: \$26.50



### #4072PK

Color: Pink

MSRP: \$26.50



### #4072ZG

Color: Zombie® Green

MSRP: \$26.50

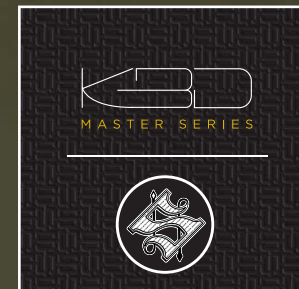


# New! KBD Master Series® Snody Knife Designs

We are proud to offer Snody Knives designed by custom knife maker, Mike Snody. Mike prides himself on producing world-class, investment grade cutlery for the most extreme, discerning and demanding knife collectors and users on the planet. Snody Boss and Big Boss knives are sold with high-grade, heavy-weight, semi-production JRE sheaths made in the US and featuring grommet holes for lashing in any carry configuration. Snody Snake Charmer comes with a hard plastic self-locking sheath, made in the US.



Each one of these KA-BARs are being made by family, friends and neighbors right here in Olean, NY.



## Sheaths

5101S

Boss



5102S

Big Boss



5103S

Snake Charmer



## Snody Extras

All Snody Knives come with 8' of 550 cord and an 8" pre-cut lanyard to affix the included custom-designed pewter bead featuring the stylized Snody "S" logo to your knife.

Bead by Schmuckatelli Co. and made in the US.



### Bonus Set of Handles - Deep Purple

Snody Knives 5101 / 5102 are mounted with Blue "Reptile" handles and include an extra set of interchangeable Deep Purple "Dolla Holla" handles.



New!

### #5101 Snody "Boss"

Blade Length 3-1/2"; Overall Length 6-9/16"

Made from 0.125" S35V stainless steel

Sheath: 5101S - JRE Leather

MSRP: \$157.99



New!

### #5102 Snody "Big Boss"

Blade Length 4-9/16"; Overall Length 9"

Made from 0.188" S35V stainless steel

Sheath: 5102S - JRE Leather

MSRP: \$217.54



New!

### #5103 Snody "Snake Charmer"

Blade Length 2-5/16"; Overall Length 6-1/2"

Made from 0.125" S35V stainless steel

Sheath: 5103S - Hard Plastic

MSRP: \$115.32



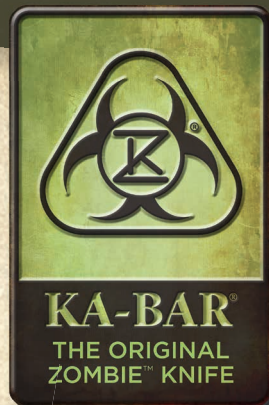


# KA-BAR® Cool Accessories

All KA-BAR® accessories are sold at Full Retail Only.  
Please visit [KA-BAR.com](http://KA-BAR.com) for new accessories and other cool stuff as it becomes available throughout the year.



#5700SIGN



#5701SIGN



#1731



#9906



#9907



#9914



**#5700SIGN KA-BAR®**  
**The Original Zombie® Knife Metal Sign**  
Dimensions: 11" x 17"  
MSRP: **\$12.99** Retail Only

**#5701SIGN**  
**KA-BAR® - The Original Zombie® Knife**  
**No Ammo Required Metal Sign**  
Dimensions: 6" x 24"  
MSRP: **\$12.99** Retail Only

**#9906 KA-BAR® Lake Effect Ice Scraper**  
MSRP: **\$7.00** Retail Only

**#1731**  
**KA-BAR® Zombie® T-Shirt**  
#1731-M  
#1731-L  
#1731-XL  
#1731-XXL  
MSRP: **\$10.00** Retail Only

**#9907 KA-BARLEY Bottle Opener**  
MSRP: **\$7.00** Retail Only

**#9914 KA-BAR® Playing Cards**  
MSRP: **\$7.00** Retail Only



# KA-BAR® Product Specification Chart

Item #	Page	MSRP	Bulk Weight*	Overall/Open Length	Blade Length	Blade Stamp	Steel	Thickness	Grind	Angle	HRC	Lock	Handle	Sheath	Mft'd
BK2	23	\$ 123.54	1.00	10-1/2"	5-1/4"	BK&T/KA-BAR	1095 Cro-Van	.25	flat	20°	56-58	N/A	Zytel®	BK2S	USA
BK3	23	\$ 167.14	1.30	12-1/2"	7"	BK&T/KA-BAR	1095 Cro-Van	.25	flat	20°	56-58	N/A	Zytel®	BK3S	USA
BK4	23	\$ 142.45	1.00	14-11/16"	9-3/8"	BK&T/KA-BAR	1095 Cro-Van	.188	flat	20°	56-58	N/A	Zytel®	BK4S	USA
BK5	23	\$ 141.16	0.75	13-1/2"	8"	BK&T/KA-BAR	1095 Cro-Van	.188	flat	20°	56-58	N/A	Zytel®	BK7S	USA
BK7	24	\$ 137.99	0.85	12-3/4"	7"	BK&T/KA-BAR	1095 Cro-Van	.188	flat	20°	56-58	N/A	Zytel®	BK7S	USA
BK9	24	\$ 155.63	1.05	14-3/4"	9-1/4"	BK&T/KA-BAR	1095 Cro-Van	.188	flat	20°	56-58	N/A	Zytel®	BK9S	USA
BK10	24	\$ 127.52	0.75	11"	5-1/2"	BK&T/KA-BAR	1095 Cro-Van	.188	flat	20°	56-58	N/A	Zytel®	BK10S	USA
BK11	24	\$ 65.33	0.20	6-3/4"	3-1/4"	BK&T/KA-BAR	1095 Cro-Van	.165	flat	20°	56-58	N/A	1095 Cro-Van	BK11S	USA
BK13CP	24	\$ 36.34	0.10	5-1/8"	2-3/8"	BK&T/KA-BAR	440A SS	.125	hollow	20°	55-57CR	N/A	440A SS	BK13S	USA
BK14	25	\$ 65.33	0.15	7"	3-1/4"	BK&T/KA-BAR	1095 Cro-Van	.165	flat	20°	56-58	N/A	1095 Cro-Van	BK11S	USA
BK15	25	\$ 118.50	0.40	10-3/8"	5-9/16"	BK&T/KA-BAR	1095 Cro-Van	.165	flat	20°	56-58	N/A	Zytel®	BK15S	USA
BK16	25	\$ 118.50	0.40	9-1/4"	4-3/8"	BK&T/KA-BAR	1095 Cro-Van	.165	flat	20°	56-58	N/A	Zytel®	BK15S	USA
BK17	25	\$ 118.50	0.40	9-1/4"	4-3/8"	BK&T/KA-BAR	1095 Cro-Van	.165	flat	20°	56-58	N/A	Zytel®	BK15S	USA
BK22	23	\$127.52	1.00	10-1/2"	5-1/4"	BK&T/KA-BAR	1095 Cro-Van	.25	flat	20°	56-58	N/A	Zytel®	BK22S	USA
BK24	25	\$83.51	0.15	7"	3-1/4"	BK&T/KA-BAR	D2	.165	flat	20°	59-60CR	N/A	D2	BK11S	USA
<b>1117</b>	<b>7</b>	<b>\$62.22</b>	<b>0.15</b>	<b>7-7/8"</b>	<b>3-7/8"</b>	<b>KA-BAR</b>	<b>1095 Cro-Van</b>	<b>.125</b>	<b>flat</b>	<b>20°</b>	<b>56-58</b>	<b>N/A</b>	<b>N/A</b>	<b>1117S</b>	<b>USA</b>
1211	7	\$ 100.92	0.70	11-3/4"	7"	USA	1095 Cro-Van	.165	flat	20°	56-58	N/A	Black Kraton G®	1211S	USA
1212	7	\$ 100.92	0.70	11-3/4"	7"	USA	1095 Cro-Van	.165	flat	20°	56-58	N/A	Black Kraton G®	1211S	USA
1213	7	\$ 106.90	0.70	11-3/4"	7"	USA	1095 Cro-Van	.165	flat	20°	56-58	N/A	Black Kraton G®	1216S	USA
1214	7	\$ 106.90	0.70	11-3/4"	7"	USA	1095 Cro-Van	.165	flat	20°	56-58	N/A	Black Kraton G®	1216S	USA
1215	4	\$ 285.72	0.70	11-7/8"	7"	USMC	1095 Cro-Van	.165	flat	20°	56-58	N/A	Leather	1217S	USA
1217	2	\$ 107.77	0.70	11-7/8"	7"	USMC	1095 Cro-Van	.165	flat	20°	56-58	N/A	Leather	1217S	USA
1218	2	\$ 107.77	0.70	11-7/8"	7"	USMC	1095 Cro-Van	.165	flat	20°	56-58	N/A	Leather	1217S	USA
1219	2	\$ 107.77	0.70	11-7/8"	7"	US ARMY	1095 Cro-Van	.165	flat	20°	56-58	N/A	Leather	1220S	USA
1220	2	\$ 107.77	0.70	11-7/8"	7"	US ARMY	1095 Cro-Van	.165	flat	20°	56-58	N/A	Leather	1220S	USA
1225	2	\$ 107.77	0.70	11-7/8"	7"	USN	1095 Cro-Van	.165	flat	20°	56-58	N/A	Leather	1225S	USA
1226	11	\$ 44.70	0.10	7"	3-5/8"	KA-BAR	DIN 1.4116 SS	.094	hollow	N/A	55-57	N/A	Leather	1226S	TAIWAN
1232	11	\$ 51.29	0.20	8-1/8"	4"	KA-BAR	DIN 1.4116 SS	.110	hollow	N/A	55-57	N/A	Leather	1232S	TAIWAN
1233	11	\$ 57.30	0.20	8-1/4"	4-3/8"	KA-BAR	DIN 1.4116 SS	.110	hollow	N/A	55-57	N/A	Leather	1233S	TAIWAN
1234	11	\$ 54.56	0.20	7-1/4"	3-1/4"	KA-BAR	DIN 1.4116 SS	.110	hollow	N/A	55-57	N/A	Leather	1234S	TAIWAN
1235	11	\$ 66.07	0.45	10-3/4"	5-7/8"	KA-BAR	DIN 1.4116 SS	.125	hollow	N/A	55-57	N/A	Leather	1235S	TAIWAN
1236	11	\$ 72.17	0.45	11-13/16"	6-15/16"	KA-BAR	DIN 1.4116 SS	.125	hollow	N/A	55-57	N/A	Leather	1236S	TAIWAN
1245	7	\$ 106.90	0.70	12-13/16"	8"	USA	1095 Cro-Van	.165	hollow	20°	56-58	N/A	Black Kraton G®	1245S	USA

New items are noted in bold • "Weight" indicates bulk knife weight in pounds. Does not include sheath or packaging. • Blade thicknesses noted are +/- .003 to .006. Olean-made US products were measured before processing.

Cro-Van = Chrome Vanadium • SS = stainless steel • CR = Cryogenically quenched stainless steel



# KA-BAR® Product Specification Chart

Item #	Page	MSRP	Bulk Weight*	Overall/Open Length	Blade Length	Blade Stamp	Steel	Thickness	Grind	Angle	HRC	Lock	Handle	Sheath	Mft'd
1248	10	\$ 83.38	1.10	16-1/2"	11"	KA-BAR	1085 Carbon	.165	hollow	N/A	52-54	N/A	TPR	1248S	TAIWAN
1249	10	\$ 83.38	1.30	17"	11-1/2"	KA-BAR	1085 Carbon	.165	hollow	N/A	52-54	N/A	TPR	1249S	TAIWAN
1250	2	\$ 107.77	0.40	9-1/4"	5-1/4"	USMC	1095 Cro-Van	.165	flat	20°	56-58	N/A	Leather	1250S	USA
1251	2	\$ 107.77	0.40	9-1/4"	5-1/4"	USA	1095 Cro-Van	.165	flat	20°	56-58	N/A	Leather	1251S	USA
1252	3	\$ 107.77	0.40	9-1/4"	5-1/4"	USMC	1095 Cro-Van	.165	flat	20°	56-58	N/A	Leather	1250S	USA
1254	7	\$ 81.05	0.35	9-3/8"	5-1/4"	USA	1095 Cro-Van	.165	flat	20°	56-58	N/A	Black Kraton G*	1256S	USA
1255	7	\$ 81.05	0.35	9-3/8"	5-1/4"	USA	1095 Cro-Van	.165	flat	20°	56-58	N/A	Black Kraton G*	1256S	USA
1256	8	\$ 81.05	0.40	9-1/4"	5-1/4"	USA	1095 Cro-Van	.165	flat	20°	56-58	N/A	Black Kraton G*	1256S	USA
1257	8	\$ 81.05	0.40	9-1/4"	5-1/4"	USA	1095 Cro-Van	.165	flat	20°	56-58	N/A	Black Kraton G*	1256S	USA
1258	8	\$ 86.06	0.40	9-1/4"	5-1/4"	USA	1095 Cro-Van	.165	flat	20°	56-58	N/A	Black Kraton G*	5016S	USA
1259	8	\$ 86.06	0.40	9-1/4"	5-1/4"	USA	1095 Cro-Van	.165	flat	20°	56-58	N/A	Black Kraton G*	5016S	USA
1261	3	\$ 107.77	0.40	9-1/4"	5-1/4"	USA	1095 Cro-Van	.165	flat	20°	56-58	N/A	Leather	1251S	USA
1271	8	\$ 106.90	0.75	12-13/16"	8"	USA	1095 Cro-Van	.165	hollow	20°	56-58	N/A	Black Kraton G*	1271S	USA
1275	30	\$ 127.74	0.85	12-1/8"	6-1/2"	KA-BAR	AUS 8A SS	.200	hollow	N/A	57-59CR	N/A	Black Zytel®	1275S	TAIWAN
1277	10	\$ 87.78	0.95	14-1/4"	9"	KA-BAR	1085 Carbon	.234	flat	N/A	55-57	N/A	TPR	1277S	TAIWAN
1278	10	\$ 76.12	1.05	12-1/4"	6-3/4"	KA-BAR	1085 Carbon	.250	flat	N/A	52-54	N/A	TPR	1278S	TAIWAN
1279	10	\$ 83.38	1.25	19-1/2"	14	KA-BAR	1085 Carbon	.165	duplex	N/A	52-54	N/A	TPR	1279S	TAIWAN
1280	8	\$ 113.36	0.90	13-3/8"	8"	USA	1095 Cro-Van	.165	flat	20°	56-58	N/A	Black Kraton G*	1280S	USA
1281	8	\$ 188.51	0.75	11-7/8"	7"	USA	D2	.188	flat	20°	59-60CR	N/A	Black Kraton G*	8017S	USA
1282	8	\$ 181.39	0.75	11-7/8"	7"	USA	D2	.188	flat	20°	59-60CR	N/A	Black Kraton G*	1216S	USA
1283	8	\$ 186.83	0.75	11-7/8"	7"	USA	D2	.188	flat	20°	59-60CR	N/A	Black Kraton G*	1211S	USA
1300	15	\$ 27.38	0.35	6-5/8"	3"	KA-BAR	420j2 SS	.078	flat	N/A	52-54	lockback	Stainless Steel	1300S	CHINA
1429	5	\$ 68.26	2.00	6" x 8"	N/A	N/A	N/A	N/A	N/A	N/A	N/A	N/A	N/A	N/A	CHINA
1431	5	\$ 107.26	2.60	19"	N/A	N/A	N/A	N/A	N/A	N/A	N/A	N/A	N/A	N/A	USA
1437	5	\$ 107.26	2.60	14-7/8"	N/A	N/A	N/A	N/A	N/A	N/A	N/A	N/A	N/A	N/A	USA
1450CP	8	\$ 39.77	0.25	10-13/16"	6-3/16"	N/A	440A SS	.083	hollow	N/A	55-57	N/A	Black Kraton G*	1450S	USA
1451CP	8	\$ 42.11	0.25	13-3/4"	9-3/16"	N/A	440A SS	.083	hollow	N/A	55-57	N/A	Black Kraton G*	1451S	USA
1477CB	27	\$ 61.38	0.20	5-5/8"	2-5/16"	KA-BAR/TDI	AUS 8A SS	.125	hollow	N/A	57-59CR	N/A	Coyote Brown Zytel®	1477CBS	TAIWAN
1477FG	27	\$ 61.38	0.20	5-5/8"	2-5/16"	KA-BAR/TDI	AUS 8A SS	.125	hollow	N/A	57-59CR	N/A	Foliage Green Zytel®	1477FGS	TAIWAN
1478BP	27	\$ 20.94	0.15	3-5/8"	1-5/8"	KA-BAR/TDI	9cr18 SS	.078	flat	N/A	58-59CR	N/A	9cr18 SS	Included	TAIWAN
1480	27	\$ 61.38	0.20	5-5/8"	2-5/16"	KA-BAR/TDI	AUS 8A SS	.125	hollow	N/A	57-59CR	N/A	Black Zytel®	1480S	TAIWAN
1480CLIP	27	\$ 11.50	0.10	2-3/4"	N/A	N/A	N/A	N/A	N/A	N/A	N/A	N/A	N/A	N/A	TAIWAN
1481	27	\$ 61.38	0.20	5-5/8"	2-5/16"	KA-BAR/TDI	AUS 8A SS	.125	hollow	N/A	57-59CR	N/A	Black Zytel®	1480S	TAIWAN

New items are noted in bold • "Weight" indicates bulk knife weight in pounds. Does not include sheath or packaging. • Blade thicknesses noted are +/- .003 to .006. Olean-made US products were measured before processing.  
Cro-Van = Chrome Vanadium • SS = stainless steel • CR = Cryogenically quenched stainless steel



# KA-BAR® Product Specification Chart

Item #	Page	MSRP	Bulk Weight*	Overall/Open Length	Blade Length	Blade Stamp	Steel	Thickness	Grind	Angle	HRC	Lock	Handle	Sheath	Mft'd
1482	28	\$ 72.50	0.40	7-9/16"	3-11/16"	KA-BAR/TDI	AUS 8A SS	.188	hollow	N/A	57-59CR	N/A	Black Zytel®	1482S	TAIWAN
1483	28	\$ 72.50	0.40	7-9/16"	3-11/16"	KA-BAR/TDI	AUS 8A SS	.188	hollow	N/A	57-59CR	N/A	Black Zytel®	1482S	TAIWAN
1485	28	\$ 72.50	0.40	7-9/16"	3-11/16"	KA-BAR/TDI	AUS 8A SS	.188	hollow	N/A	57-59CR	N/A	Black Zytel®	1482S	TAIWAN
1485FG	28	\$ 72.50	0.40	7-9/16"	3-11/16"	KA-BAR/TDI	AUS 8A SS	.188	hollow	N/A	57-59CR	N/A	Foliage Green Zytel®	1482FGS	TAIWAN
1490	28	\$ 45.54	0.60	18"	N/A	N/A	N/A	N/A	N/A	N/A	N/A	N/A	N/A	N/A	CHINA
1491	29	\$ 45.54	1.35	17-1/2"	N/A	N/A	N/A	N/A	N/A	N/A	N/A	N/A	N/A	N/A	CHINA
1492	29	\$ 70.17	N/A	N/A	N/A	N/A	N/A	N/A	N/A	N/A	N/A	N/A	N/A	N/A	CHINA
2211	9	\$ 137.97	0.90	14-3/8"	9-3/8"	USA	1095 Cro-Van	.165	flat	20°	56-58	N/A	Black Kraton G®	2211S	USA
<b>2212</b>	<b>19</b>	<b>\$137.97</b>	<b>0.90</b>	<b>14-3/8"</b>	<b>9-3/8"</b>	<b>KA-BAR/ZK/USA</b>	<b>1095 Cro-Van</b>	<b>.165</b>	<b>flat</b>	<b>20°</b>	<b>56-58</b>	<b>N/A</b>	<b>Kraton G®</b>	<b>2211S</b>	<b>USA</b>
2217	3	\$ 144.20	0.90	14-3/8"	9-3/8"	USA	1095 Cro-Van	.165	flat	20°	56-58	N/A	Leather	2217S	USA
2221	9	\$ 86.08	0.50	9-3/16"	5-1/8"	USN	1095 Cro-Van	.165	flat	20°	56-58	N/A	Black Kraton G®	2221S	USA
2222	9	\$ 86.08	0.50	9-3/16"	5-1/8"	USN	1095 Cro-Van	.165	flat	20°	56-58	N/A	Black Kraton G®	2221S	USA
2225	3	\$ 107.77	0.50	9-3/8"	5-1/8"	USN	1095 Cro-Van	.165	flat	20°	56-58	N/A	Leather	2225S	USA
2226	3	\$ 107.77	0.50	9-3/8"	5-1/8"	USN	1095 Cro-Van	.165	flat	20°	56-58	N/A	Leather	2225S	USA
2482	29	\$ 45.55	0.35	7-1/2"	3-5/8"	KA-BAR/TDI	5Cr15MO	.156	hollow	N/A	54-56	side lock	G10	N/A	CHINA
2483	29	\$ 45.55	0.35	7-1/2"	3-5/8"	KA-BAR/TDI	5Cr15MO	.156	hollow	N/A	54-56	side lock	G10	N/A	CHINA
2484	29	\$ 93.57	1.4	13"	4"	KA-BAR/TDI	1095 Cro-Van	.250	flat	20°	56-58	N/A	1095 Cro-Van	2484S	USA
<b>2485</b>	<b>29</b>	<b>\$111.56</b>	<b>0.35</b>	<b>7-1/4"</b>	<b>3-9/16"</b>	<b>KA-BAR/TDI/Hinderer</b>	<b>1095 Cro-Van</b>	<b>.188</b>	<b>flat</b>	<b>20°</b>	<b>56-58</b>	<b>N/A</b>	<b>Zytel®</b>	<b>2485S</b>	<b>USA</b>
<b>2486</b>	<b>29</b>	<b>\$111.56</b>	<b>0.35</b>	<b>7-1/4"</b>	<b>3-9/16"</b>	<b>KA-BAR/TDI/Hinderer</b>	<b>1095 Cro-Van</b>	<b>.188</b>	<b>hollow</b>	<b>20°</b>	<b>56-58</b>	<b>N/A</b>	<b>Zytel®</b>	<b>2486S</b>	<b>USA</b>
3030BP	15	\$ 23.27	0.25	5-1/2"	2-3/16"	KA-BAR/BESH	3cr13 SS	.125	chisel	N/A	54-56	N/A	3cr13 SS	Included	CHINA
3050	16	\$ 72.06	0.45	9-1/8"	3-7/8"	KA-BAR	AUS 8A SS	.125	hollow	N/A	57-59CR	lockback	Black Zytel®	3050S	TAIWAN
3051	16	\$ 72.06	0.45	9-1/8"	3-7/8"	KA-BAR	AUS 8A SS	.125	hollow	N/A	57-59CR	lockback	Black Zytel®	3050S	TAIWAN
3053	16	\$ 72.06	0.45	9-1/8"	3-7/8"	KA-BAR	AUS 8A SS	.125	hollow	N/A	57-59CR	lockback	Desert Zytel®	3052S	TAIWAN
3058	16/18	\$ 72.06	0.50	9-1/8"	3-7/8"	KA-BAR	AUS 8A SS	.125	hollow	N/A	57-59CR	lockback	Nuclear Green Zytel®	3058S	TAIWAN
3059	16/18	\$ 72.06	0.50	9-1/8"	3-7/8"	KA-BAR	AUS 8A SS	.125	hollow	N/A	57-59CR	lockback	Nuclear Green Zytel®	3058S	TAIWAN
<b>3062</b>	<b>17</b>	<b>\$37.31</b>	<b>0.60</b>	<b>9-1/4"</b>	<b>3-15/16"</b>	<b>KA-BAR</b>	<b>420 SS</b>	<b>.125</b>	<b>hollow</b>	<b>N/A</b>	<b>52-54</b>	<b>N/A</b>	<b>G10</b>	<b>N/A</b>	<b>CHINA</b>
<b>3063</b>	<b>17</b>	<b>\$37.31</b>	<b>0.60</b>	<b>9-1/4"</b>	<b>3-15/16"</b>	<b>KA-BAR</b>	<b>420 SS</b>	<b>.125</b>	<b>hollow</b>	<b>N/A</b>	<b>52-54</b>	<b>N/A</b>	<b>G10</b>	<b>N/A</b>	<b>CHINA</b>
<b>3064</b>	<b>17</b>	<b>\$37.31</b>	<b>0.60</b>	<b>9-1/4"</b>	<b>3-15/16"</b>	<b>KA-BAR</b>	<b>420 SS</b>	<b>.125</b>	<b>hollow</b>	<b>N/A</b>	<b>52-54</b>	<b>N/A</b>	<b>G10</b>	<b>N/A</b>	<b>CHINA</b>
<b>3065</b>	<b>17</b>	<b>\$37.31</b>	<b>0.60</b>	<b>9-1/4"</b>	<b>3-15/16"</b>	<b>KA-BAR</b>	<b>420 SS</b>	<b>.125</b>	<b>hollow</b>	<b>N/A</b>	<b>52-54</b>	<b>N/A</b>	<b>G10</b>	<b>N/A</b>	<b>CHINA</b>
<b>3072</b>	<b>15</b>	<b>\$ 19.28</b>	<b>0.30</b>	<b>7-9/16"</b>	<b>3"</b>	<b>KA-BAR</b>	<b>420 SS</b>	<b>.110</b>	<b>hollow</b>	<b>N/A</b>	<b>52-54</b>	<b>side lock</b>	<b>G10</b>	<b>N/A</b>	<b>CHINA</b>
<b>3073</b>	<b>15</b>	<b>\$ 19.28</b>	<b>0.30</b>	<b>7-9/16"</b>	<b>3"</b>	<b>KA-BAR</b>	<b>420 SS</b>	<b>.110</b>	<b>hollow</b>	<b>N/A</b>	<b>52-54</b>	<b>side lock</b>	<b>G10</b>	<b>N/A</b>	<b>CHINA</b>
<b>3074</b>	<b>15</b>	<b>\$ 19.28</b>	<b>0.30</b>	<b>7-9/16"</b>	<b>3"</b>	<b>KA-BAR</b>	<b>420 SS</b>	<b>.110</b>	<b>hollow</b>	<b>N/A</b>	<b>52-54</b>	<b>side lock</b>	<b>G10</b>	<b>N/A</b>	<b>CHINA</b>
<b>3075</b>	<b>15</b>	<b>\$ 19.28</b>	<b>0.30</b>	<b>7-9/16"</b>	<b>3"</b>	<b>KA-BAR</b>	<b>420 SS</b>	<b>.110</b>	<b>hollow</b>	<b>N/A</b>	<b>52-54</b>	<b>side lock</b>	<b>G10</b>	<b>N/A</b>	<b>CHINA</b>

New items are noted in bold • "Weight" indicates bulk knife weight in pounds. Does not include sheath or packaging. • Blade thicknesses noted are +/- .003 to .006. Olean-made US products were measured before processing.  
Cro-Van = Chrome Vanadium • SS = stainless steel • CR = Cryogenically quenched stainless steel



# KA-BAR® Product Specification Chart

Item #	Page	MSRP	Bulk Weight*	Overall/Open Length	Blade Length	Blade Stamp	Steel	Thickness	Grind	Angle	HRC	Lock	Handle	Sheath	Mft'd
3076	15	\$ 22.60	0.30	8-1/2"	3-5/8"	KA-BAR	420 SS	.110	hollow	N/A	50-52CR	side lock	G10	N/A	CHINA
3077	15	\$ 22.60	0.40	8-7/8"	3-7/8"	KA-BAR	420 SS	.110	hollow	N/A	50-52CR	side lock	G10	N/A	CHINA
3078	15	\$ 22.60	0.30	7-7/8"	3-1/2"	KA-BAR	420 SS	.110	hollow	N/A	50-52CR	side lock	G10	N/A	CHINA
3079	15	\$ 22.60	0.25	6-7/8"	2-7/8"	KA-BAR	420 SS	.110	hollow	N/A	50-52CR	side lock	G10	N/A	CHINA
3211	12	\$ 129.61	0.20	7-3/8"	3-1/8"	KA-BAR	440C SS	.094	flat	N/A	57-59	slip joint	American Chestnut	N/A	USA
3313	12	\$ 167.39	0.20	6-7/8"	3"	KA-BAR	440C SS	.094	flat	N/A	57-59	slip joint	American Chestnut	N/A	USA
3576	12	\$ 182.49	0.30	7-3/4"	3-1/2"	KA-BAR	D2	.156	hollow	N/A	58-60	N/A	American Chestnut	3576S	USA
4062	30	\$ 31.12	0.15	7-1/4"	3"	KA-BAR/DOZIER	AUS 8A SS	.110	hollow	N/A	56-58CR	lockback	Black Zytel®	N/A	TAIWAN
4062BO	30	\$ 31.12	0.15	7-1/4"	3"	KA-BAR/DOZIER	AUS 8A SS	.110	hollow	N/A	56-58CR	lockback	Blaze Orange Zytel®	N/A	TAIWAN
4062CB	30	\$ 31.12	0.15	7-1/4"	3"	KA-BAR/DOZIER	AUS 8A SS	.110	hollow	N/A	56-58CR	lockback	Coyote Brown Zytel®	N/A	TAIWAN
4062FG	30	\$ 31.12	0.15	7-1/4"	3"	KA-BAR/DOZIER	AUS 8A SS	.110	hollow	N/A	56-58CR	lockback	Foliage Green Zytel®	N/A	TAIWAN
4062PK	30	\$ 31.12	0.15	7-1/4"	3"	KA-BAR/DOZIER	AUS 8A SS	.110	hollow	N/A	56-58CR	lockback	Pink Zytel®	N/A	TAIWAN
4062ZG	30	\$ 31.12	0.15	7-1/4"	3"	KA-BAR/DOZIER	AUS 8A SS	.110	hollow	N/A	56-58CR	lockback	Zombie® Green Zytel®	N/A	TAIWAN
4065	31	\$ 31.12	0.15	7-1/4"	3"	KA-BAR/DOZIER	AUS 8A SS	.110	hollow	N/A	56-58CR	lockback	Black Zytel®	N/A	TAIWAN
4065BO	31	\$ 31.12	0.15	7-1/4"	3"	KA-BAR/DOZIER	AUS 8A SS	.110	hollow	N/A	56-58CR	lockback	Blaze Orange Zytel®	N/A	TAIWAN
4065PK	31	\$ 31.12	0.15	7-1/4"	3"	KA-BAR/DOZIER	AUS 8A SS	.110	hollow	N/A	56-58CR	lockback	Pink Zytel®	N/A	TAIWAN
4065ZG	31	\$ 31.12	0.15	7-1/4"	3"	KA-BAR/DOZIER	AUS 8A SS	.110	hollow	N/A	56-58CR	lockback	Zombie® Green Zytel®	N/A	TAIWAN
4072	31	\$ 26.50	0.05	5-3/4"	2-1/4"	KA-BAR/DOZIER	AUS 8A SS	.110	hollow	N/A	56-58CR	lockback	Black Zytel®	N/A	TAIWAN
4072BO	31	\$ 26.50	0.05	5-3/4"	2-1/4"	KA-BAR/DOZIER	AUS 8A SS	.110	hollow	N/A	56-58CR	lockback	Blaze Orange Zytel®	N/A	TAIWAN
4072PK	31	\$ 26.50	0.05	5-3/4"	2-1/4"	KA-BAR/DOZIER	AUS 8A SS	.110	hollow	N/A	56-58CR	lockback	Pink Zytel®	N/A	TAIWAN
4072ZG	31	\$ 26.50	0.05	5-3/4"	2-1/4"	KA-BAR/DOZIER	AUS 8A SS	.110	hollow	N/A	56-58CR	lockback	Zombie® Green Zytel®	N/A	TAIWAN
4084	31	\$ 53.15	0.35	8"	3-1/2"	KA-BAR/DOZIER	8Cr13MoV	.125	hollow	N/A	56-58CR	lockback	Micarta®	N/A	CHINA
5011	9	\$ 106.90	0.70	11-3/4"	7"	USA	1095 Cro-Van	.165	flat	20°	56-58	N/A	Foliage Green Kraton G®	5011S	USA
5012	9	\$ 106.90	0.70	11-3/4"	7"	USA	1095 Cro-Van	.165	flat	20°	56-58	N/A	Foliage Green Kraton G®	5011S	USA
5017	2	\$ 117.59	0.70	11-7/8"	7"	USMC	1095 Cro-Van	.165	flat	20°	56-58	N/A	Leather	1216S	USA
5018	2	\$ 117.59	0.70	11-7/8"	7"	USMC	1095 Cro-Van	.165	flat	20°	56-58	N/A	Leather	1216S	USA
5019	2	\$ 117.59	0.70	11-7/8"	7"	US ARMY	1095 Cro-Van	.165	flat	20°	56-58	N/A	Leather	1216S	USA
5020	2	\$ 117.59	0.70	11-7/8"	7"	US ARMY	1095 Cro-Van	.165	flat	20°	56-58	N/A	Leather	1216S	USA
5025	2	\$ 117.59	0.70	11-7/8"	7"	USN	1095 Cro-Van	.165	flat	20°	56-58	N/A	Leather	1216S	USA
5054	7	\$ 86.08	0.35	9-3/8"	5-1/4"	USA	1095 Cro-Van	.165	flat	20°	56-58	N/A	Black Kraton G®	5016S	USA
5055	7	\$ 86.08	0.35	9-3/8"	5-1/4"	USA	1095 Cro-Van	.165	flat	20°	56-58	N/A	Black Kraton G®	5016S	USA
<b>5101</b>	<b>32</b>	<b>\$157.99</b>	<b>0.15</b>	<b>6-9/16"</b>	<b>3-1/2"</b>	<b>KA-BAR/SNODY</b>	<b>S35V SS</b>	<b>.125</b>	<b>flat</b>	<b>20°</b>	<b>58-62</b>	<b>N/A</b>	<b>Zytel®</b>	<b>5101S</b>	<b>USA</b>
<b>5102</b>	<b>32</b>	<b>\$217.54</b>	<b>0.40</b>	<b>9"</b>	<b>4-9/16"</b>	<b>KA-BAR/SNODY</b>	<b>S35V SS</b>	<b>.188</b>	<b>flat</b>	<b>20°</b>	<b>58-62</b>	<b>N/A</b>	<b>Zytel®</b>	<b>5102S</b>	<b>USA</b>

New items are noted in bold • "Weight" indicates bulk knife weight in pounds. Does not include sheath or packaging. • Blade thicknesses noted are +/- .003 to .006. Olean-made US products were measured before processing.  
Cro-Van = Chrome Vanadium • SS = stainless steel • CR = Cryogenically quenched stainless steel



# KA-BAR® Product Specification Chart

Item #	Page	MSRP	Bulk Weight*	Overall/Open Length	Blade Length	Blade Stamp	Steel	Thickness	Grind	Angle	HRC	Lock	Handle	Sheath	Mft'd
<b>5103</b>	<b>32</b>	<b>\$115.32</b>	<b>0.10</b>	<b>6-1/2"</b>	<b>2-5/16"</b>	<b>KA-BAR/SNODY</b>	<b>S35V SS</b>	<b>.125</b>	<b>hollow</b>	<b>20°</b>	<b>58-62</b>	<b>N/A</b>	<b>N/A</b>	<b>5103S</b>	<b>USA</b>
5597	20	\$ 45.18	0.20	7-7/8"	3-3/8"	KA-BAR/JAB	AUS 8A SS	.110	hollow	N/A	57-58	lockback	GFN-PA66	N/A	TAIWAN
5598	20	\$ 45.18	0.20	7-7/8"	3-3/8"	KA-BAR/JAB	AUS 8A SS	.110	hollow	N/A	57-58	lockback	GFN-PA66	N/A	TAIWAN
5599BP	20	\$ 12.88	0.05	6"	2-5/8"	KA-BAR/JAB	5 Cr13 SS	.110	flat	N/A	52-54	N/A	5Cr13 SS	5599S	CHINA
5600	20	\$ 155.64	1.10	12-3/4"	7-1/4"	KA-BAR/"A"	1095 Cro-Van	.250	flat	20°	56-58	N/A	GFN-PA66	5600S	USA
5601	21	\$ 148.23	0.85	12-3/4"	7-1/4"	KA-BAR/JAB	1095 Cro-Van	.188	flat	20°	56-58	N/A	GFN-PA66	5601S	USA
5602	21	\$ 75.33	0.25	8"	4-1/16"	KA-BAR/"A"	440A SS	.188	hollow	20°	55-58	N/A	GFN-PA66	5602S	USA
<b>5603</b>	<b>21</b>	<b>\$155.63</b>	<b>1.30</b>	<b>19-5/8"</b>	<b>14-1/8"</b>	<b>KA-BAR/"A"</b>	<b>1095 Cro-Van</b>	<b>.188</b>	<b>flat</b>	<b>20°</b>	<b>56-58</b>	<b>N/A</b>	<b>GFN-PA66</b>	<b>5603S</b>	<b>USA</b>
<b>5604</b>	<b>21</b>	<b>\$75.33</b>	<b>0.25</b>	<b>8"</b>	<b>4-3/32"</b>	<b>KA-BAR/"A"</b>	<b>440A SS</b>	<b>.188</b>	<b>hollow</b>	<b>20°</b>	<b>55-58</b>	<b>N/A</b>	<b>GFN-PA66</b>	<b>5602S</b>	<b>USA</b>
5698	18	\$ 45.18	0.20	7-7/8"	3-3/8"	KA-BAR/ZK	AUS 8A SS	.110	flat	N/A	57-58	lockback	GFN-PA66	N/A	TAIWAN
5699BP	18	\$ 12.88	0.05	6-3/8"	3-1/8"	KA-BAR/ZK	5 Cr13 SS	.110	hollow	N/A	52-54	N/A	5 Cr13 SS	5699S	CHINA
5700	18	\$ 148.23	0.95	13"	7-1/2"	KA-BAR/ZK/USA	1095 Cro-Van	.188	flat	20°	56-58	N/A	GFN-PA66	5700S	USA
5701	18	\$ 148.23	0.95	15-1/4"	9-11/16"	KA-BAR/ZK/USA	1095 Cro-Van	.188	flat	20°	56-58	N/A	GFN-PA66	5701S	USA
5702	19	\$ 148.23	1.00	15-3/4"	10-3/16"	KA-BAR/ZK/USA	1095 Cro-Van	.188	flat	20°	56-58	N/A	GFN-PA66	5701S	USA
5705	19	\$ 172.12	1.60	15-1/2"	9-3/4"	KA-BAR/ZK/USA	1095 Cro-Van	0.25	flat	20°	56-58	N/A	GFN-PA66	5705S	USA
5706	19	\$ 172.12	1.60	18"	12-1/2"	KA-BAR/ZK/USA	1095 Cro-Van	0.25	flat	20°	56-58	N/A	GFN-PA66	5706S	USA
6110	12	\$ 350.00	0.35	9-1/2"	4-1/4"	Union Cutlery	D2	.125	flat	N/A	58-60	slip joint	Bone	N/A	USA
<b>6111CU</b>	<b>12</b>	<b>\$114.74</b>	<b>0.15</b>	<b>6-7/8"</b>	<b>3-1/16"</b>	<b>KA-BAR</b>	<b>14-4 CrMO</b>	<b>N/A</b>	<b>flat</b>	<b>N/A</b>	<b>58-60</b>	<b>slip joint</b>	<b>Bone</b>	<b>N/A</b>	<b>USA</b>
6112CU	12	\$ 140.35	0.25	6-3/4"	3"	KA-BAR	D2	.110	flat	N/A	56-58	lockback	Bone	N/A	USA
<b>6123CU</b>	<b>12</b>	<b>\$124.19</b>	<b>0.20</b>	<b>5-11/16"</b>	<b>2-1/2"</b>	<b>KA-BAR</b>	<b>14-4 CrMO</b>	<b>N/A</b>	<b>flat</b>	<b>N/A</b>	<b>58-60</b>	<b>slip joint</b>	<b>Bone</b>	<b>N/A</b>	<b>USA</b>
6199CU	12	\$ 189.12	0.25	8-5/8"	3-1/2"	KA-BAR	D2	.110	flat	N/A	56-58	lockback	Bone	N/A	USA
<b>6211CU</b>	<b>13</b>	<b>\$146.85</b>	<b>0.25</b>	<b>7-3/8"</b>	<b>3-1/8"</b>	<b>KA-BAR</b>	<b>440C</b>	<b>N/A</b>	<b>flat</b>	<b>N/A</b>	<b>57-59</b>	<b>slip joint</b>	<b>Bone</b>	<b>N/A</b>	<b>USA</b>
6250	13	\$ 275.00	0.40	7-3/16"	3"	Union Razor Co.	1095 Cro-Van	.125	flat	N/A	56-58	slip joint	Bone	N/A	USA
<b>6313CU</b>	<b>13</b>	<b>\$177.10</b>	<b>0.20</b>	<b>6-7/8"</b>	<b>3"</b>	<b>KA-BAR</b>	<b>440C</b>	<b>N/A</b>	<b>flat</b>	<b>N/A</b>	<b>57-59</b>	<b>slip joint</b>	<b>bone</b>	<b>N/A</b>	<b>USA</b>
6476	13	\$ 250.00	0.35	10-1/4"	5-7/8"	Union Razor Co.	1095 Cro-Van	.156	flat	N/A	56-58	N/A	Bone	3576S	USA
<b>6576CU</b>	<b>13</b>	<b>\$192.21</b>	<b>0.35</b>	<b>7-3/4"</b>	<b>3-1/2"</b>	<b>KA-BAR</b>	<b>D2</b>	<b>N/A</b>	<b>hollow</b>	<b>N/A</b>	<b>58-60</b>	<b>N/A</b>	<b>Bone</b>	<b>N/A</b>	<b>USA</b>
8111	13	\$ 121.87	0.10	6-7/8"	3-1/16"	KA-BAR	14-4CrMO	.110	flat	N/A	58-60	slip joint	Ram's Horn	N/A	USA
8112	13	\$ 148.30	0.15	6-7/8"	3-1/16"	KA-BAR	D2	.110	flat	N/A	58-60	lockback	Ram's Horn	N/A	USA
9105	5	\$ 117.80	0.70	11-7/8"	7"	US ARMY	1095 Cro-Van	.165	flat	20°	56-58	N/A	Leather	1220S	USA
9106	5	\$ 117.80	0.70	11-7/8"	7"	USMC	1095 Cro-Van	.165	flat	20°	56-58	N/A	Leather	1217S	USA
9108	5	\$ 117.80	0.70	11-7/8"	7"	US ARMY	1095 Cro-Van	.165	flat	20°	56-58	N/A	Leather	1220S	USA
9109	5	\$ 117.80	0.70	11-7/8"	7"	USMC	1095 Cro-Van	.165	flat	20°	56-58	N/A	Leather	1217S	USA
9110	5	\$ 117.80	0.70	11-7/8"	7"	USN	1095 Cro-Van	.165	flat	20°	56-58	N/A	Leather	1225S	USA

New items are noted in bold • "Weight" indicates bulk knife weight in pounds. Does not include sheath or packaging. • Blade thicknesses noted are +/- .003 to .006. Olean-made US products were measured before processing.  
Cro-Van = Chrome Vanadium • SS = stainless steel • CR = Cryogenically quenched stainless steel



# KA-BAR® Product Specification Chart

Item #	Page	MSRP	Bulk Weight*	Overall/Open Length	Blade Length	Blade Stamp	Steel	Thickness	Grind	Angle	HRC	Lock	Handle	Sheath	Mft'd
9127	5	\$ 117.80	0.70	11-7/8"	7"	US ARMY	1095 Cro-Van	.165	flat	20°	56-58	N/A	Leather	1220S	USA
9128	5	\$ 117.80	0.70	11-7/8"	7"	USMC	1095 Cro-Van	.165	flat	20°	56-58	N/A	Leather	1217S	USA
9131	5	\$ 117.80	0.70	11-7/8"	7"	USN	1095 Cro-Van	.165	flat	20°	56-58	N/A	Leather	1225S	USA
9137	5	\$ 117.80	0.70	11-7/8"	7"	USMC	1095 Cro-Van	.165	flat	20°	56-58	N/A	Leather	1217S	USA
9138	5	\$ 117.80	0.70	11-7/8"	7"	USN	1095 Cro-Van	.165	flat	20°	56-58	N/A	Leather	1225S	USA
9139	5	\$ 117.80	0.70	11-7/8"	7"	US ARMY	1095 Cro-Van	.165	flat	20°	56-58	N/A	Leather	1220S	USA
9140	5	\$ 117.80	0.70	11-7/8"	7"	USMC	1095 Cro-Van	.165	flat	20°	56-58	N/A	Leather	1217S	USA
9141	5	\$ 117.80	0.70	11-7/8"	7"	USN	1095 Cro-Van	.165	flat	20°	56-58	N/A	Leather	1225S	USA
9147	5	\$ 117.80	0.70	11-7/8"	7"	US ARMY	1095 Cro-Van	.165	flat	20°	56-58	N/A	Leather	1220S	USA
9148	5	\$ 117.80	0.70	11-7/8"	7"	USMC	1095 Cro-Van	.165	flat	20°	56-58	N/A	Leather	1217S	USA
9149	5	\$ 117.80	0.70	11-7/8"	7"	USN	1095 Cro-Van	.165	flat	20°	56-58	N/A	Leather	1225S	USA
9151	4	\$ 117.80	0.70	11-7/8"	7"	US ARMY	1095 Cro-Van	.165	flat	20°	56-58	N/A	Leather	1220S	USA
9152	4	\$ 117.80	0.70	11-7/8"	7"	USMC	1095 Cro-Van	.165	flat	20°	56-58	N/A	Leather	1217S	USA
9153	4	\$ 117.80	0.70	11-7/8"	7"	USN	1095 Cro-Van	.165	flat	20°	56-58	N/A	Leather	1225S	USA
9155	4	\$ 117.80	0.70	11-7/8"	7"	US ARMY	1095 Cro-Van	.165	flat	20°	56-58	N/A	Leather	1220S	USA
9156	4	\$ 117.80	0.70	11-7/8"	7"	USMC	1095 Cro-Van	.165	flat	20°	56-58	N/A	Leather	1217S	USA
9157	4	\$ 117.80	0.70	11-7/8"	7"	USN	1095 Cro-Van	.165	flat	20°	56-58	N/A	Leather	1225S	USA
9164	4	\$ 117.80	0.70	11-7/8"	7"	US ARMY	1095 Cro-Van	.165	flat	20°	56-58	N/A	Leather	1220S	USA
9165	4	\$ 117.80	0.70	11-7/8"	7"	USMC	1095 Cro-Van	.165	flat	20°	56-58	N/A	Leather	1217S	USA
9166	4	\$ 117.80	0.70	11-7/8"	7"	USN	1095 Cro-Van	.165	flat	20°	56-58	N/A	Leather	1225S	USA
9168	4	\$ 117.80	0.70	11-7/8"	7"	US ARMY	1095 Cro-Van	.165	flat	20°	56-58	N/A	Leather	1220S	USA
9169	4	\$ 117.80	0.70	11-7/8"	7"	USMC	1095 Cro-Van	.165	flat	20°	56-58	N/A	Leather	1217S	USA
9170	4	\$ 117.80	0.70	11-7/8"	7"	USN	1095 Cro-Van	.165	flat	20°	56-58	N/A	Leather	1225S	USA
9177	4	\$ 117.80	0.70	11-7/8"	7"	US ARMY	1095 Cro-Van	.165	flat	20°	56-58	N/A	Leather	1220S	USA
9178	4	\$ 117.80	0.70	11-7/8"	7"	USMC	1095 Cro-Van	.165	flat	20°	56-58	N/A	Leather	1217S	USA
9179	4	\$ 117.80	0.70	11-7/8"	7"	USN	1095 Cro-Van	.165	flat	20°	56-58	N/A	Leather	1225S	USA
9406	28	\$ 122.80	2.15	39"	N/A	N/A	Aluminum	N/A	N/A	N/A	N/A	N/A	N/A	N/A	USA
9472	31	\$ 48.18	0.10	5-3/4"	2-1/4"	KA-BAR/DOZIER	AUS 8A SS	.110	hollow	N/A	56-58CR	lockback	Pink & Zombie® Green Zytel®	N/A	TAIWAN

New items are noted in bold • "Weight" indicates bulk knife weight in pounds. Does not include sheath or packaging. • Blade thicknesses noted are +/- .003 to .006. Olean-made US products were measured before processing.  
Cro-Van = Chrome Vanadium • SS = stainless steel • CR = Cryogenically quenched stainless steel



# KA-BAR® Limited Lifetime Warranty

## LIMITED LIFETIME WARRANTY

KA-BAR Knives, Inc. (the "Company") warrants, to the original purchaser of the knife only, that this knife will be free from defects in material and craftsmanship under normal use and maintenance for the lifetime of the original purchaser. This Limited Warranty does not apply to any failure of, defect in, or damage to the knife caused by neglect, normal wear and tear, or by improper use, including throwing the knife, batoning with the knife, using the blades as a can opener, chisel, pry bar, screwdriver, digging tool, or for any heavy work for which the knife was not designed.

If the knife fails to satisfy this Limited Warranty, the Company will repair or replace the knife or substitute a knife of comparable value, at the Company's option, and such repair, replacement or substitution shall constitute the sole remedy for any failure of the knife to satisfy this Limited Warranty or any implied warranty (ies) of the Company. In order to have a Limited Warranty claim evaluated by the Company, you must return the knife, at your own expense and risk, to KA-BAR Knives, Inc., at 200 Homer Street, Olean, NY 14760, attention Customer Service Department. Please include with the returned knife a brief written description of any claimed defect(s) in or failure(s) of the knife. Any returned knife determined by the Company to not be eligible for repair, replacement or substitution under the terms of the Limited Warranty will be returned to the Owner.

THE COMPANY MAKES NO EXPRESS WARRANTY OR REPRESENTATION WHATSOEVER OF OR WITH RESPECT TO THE KNIFE OTHER THAN THE FOREGOING LIMITED WARRANTY, AND ALL SUCH OTHER EXPRESS WARRANTIES ARE HEREBY EXPRESSLY EXCLUDED. ANY IMPLIED WARRANTIES OF THE COMPANY, INCLUDING WARRANTIES OF MERCHANTABILITY AND FITNESS, ARE LIMITED IN DURATION TO THE DURATION OF THIS LIMITED WARRANTY. THE COMPANY WILL NOT BE LIABLE FOR ANY SPECIAL, INCIDENTAL, OR CONSEQUENTIAL DAMAGES, AND ALL SUCH DAMAGES ARE EXPRESSLY EXCLUDED.

Some states do not allow limitations on how long an implied warranty lasts, or exclusion or limitation of incidental or consequential damages, so the above limitations or exclusion may not apply to you. This warranty gives you specific legal rights, and you may also have other rights which vary from state to state.



# KA-BAR® Glossary of Terms



**1095 Cro-Van Steel** Easy to sharpen, plain carbon steel used in knife making. Proven to be one of the most popular steels used in KA-BAR® Knives.

**440A Steel** A high-carbon stainless steel used in many American production knives.

**Clam Pack** A clear plastic packaging option that allows products to be hung on peg boards for retail merchandising.

**Cryogenic Quenching (CR)** The process of freezing blades to improve blade performance.

**D2 Steel** A high-carbon, high-chrome tool steel often used for blanking dies. This steel has excellent edge holding ability but is very difficult to process.

**Epoxy Powder Coating** A coating process that protects blades from corrosion and also makes them non-reflective.

**Flat Ground** A grind that tapers from the top of the blade down to the cutting edge. Also known as a "V" grind.

**Full-Length Tang** Extension of the blade steel that runs completely through the handle to the end of the knife.

**Full Tang** A tang that shows all around the handle of the knife between two pieces of handle material.

**Game Hook** Also known as a gut hook, this blade shape is best for opening the flesh of game.

**Glass-Filled Nylon (GFN-PA66)** Material used to make sheaths. Nylon is reinforced with glass particles and other materials to provide strength and durability while still allowing some flexibility.

**G10** An extremely durable material made of woven fiberglass soaked in epoxy resin, then highly compressed and baked.

**Guard** Also known as a hilt, is the piece of steel that separates the handle and the blade. Serves to keep the hand from slipping on the blade when cutting. Can be single or double.

**Hollow Ground** The ground surface of the blade is concave. Used to create a fine cutting edge.

**Kraton G® Thermoplastic Elastomer** Referred to simply as Kraton® or Kraton G®, is a man made material resembling rubber that can be molded into knife handles. Provides a non-slip grip. Trademark of Kraton Polymers Group of Companies.

**Lockback** A folding knife that has a lock release on the back of the handle.

**Manufacturer's Suggested Retail Price (MSRP)** The price at which the manufacturer recommends retailers sell their product. Some sellers may sell above, at, or below this price. This is not determined by the manufacturer.

**Micarta®** A man made material, made by layering resin and cloth. Used to make very fine knife handles. Westinghouse trademark.

**Powdered Metal** A process used to make shaped metal pieces. Fine metal particles are molded under pressure and then fused under high heat. Also known as sintered metal.

**Reclaimed American Chestnut** Back in the early 1900's, Chestnut blight caused a fungus that eventually killed off three and one half billion American Chestnut trees. KA-BAR®'S Traditional Dog's Head Folders are made with handles created from the wood of a deconstructed barn in Hopkinsville, KY, that was primarily framed and sided before the blight with American Chestnut.

**Rockwell Hardness (HRC)** An industry scale used for measuring the hardness of blade steel. The higher the reading, the harder the steel. Written as HRC or RC followed by a range of numbers.

**S35V** A CPM stainless steel with notable edge retention and toughness.

**Side Lock** Also known as a linerlock. A locking mechanism that features a tab cut out of the liner which is used as a stop to lock the blade in an open position. To close, the liner tab is pushed back to its original position.

**TPR** Thermo-Plastic Rubber used for making knife handles.

**Zytel®** A glass-filled nylon material used in making handles for knives. DuPont trademark.



**KA-BAR® Knives, Inc.**  
Since 1898

**Manufacturer Representatives for KA-BAR® Dealers and Distributors**

---

Alabama, Connecticut, D.C., Delaware, Florida,  
Georgia, Kentucky, Maine, Maryland, Massachusetts,  
Mississippi, New Hampshire, New Jersey, New York,  
Pennsylvania, Rhode Island, Vermont, Virginia,  
and West Virginia

**Jones and Company, Inc.**

7806 S.W. Ellipse Way  
Stuart, FL 34997-7209  
772-221-0100  
Fax: 772-221-2266

---

Arkansas, Louisiana, Oklahoma, and Texas

**Laylock and Associates**

1050 E. 2nd St. #167  
Edmond, OK 73034-5313  
405-715-2764  
Fax: 405-715-4963

---

Alaska, Arizona, California, Colorado, Hawaii, Idaho,  
Montana, Nevada, New Mexico, Oregon, Utah,  
Washington, and Wyoming

**Owen J. Brown and Associates**

15235 Brand Blvd. No. A-106  
Mission Hills, CA 91345  
818-365-4822  
Fax: 818-365-8622

---

Illinois, Iowa, Kansas, Michigan, Minnesota, Missouri,  
North Dakota, South Dakota and Wisconsin.

**Proactive Sales & Marketing**

15880 Blue Mound Rd  
Valley Falls, KS 66088-5183  
785-945-6689  
Fax: 785-945-6863

Indiana and Tennessee

**V&R Sales**

160 S College St  
Pikeville, KY 41501-1733  
606-434-9146  
Fax: 866-834-5490

---

Nebraska, North Carolina, Ohio and South Carolina

**KA-BAR®**

200 Homer Street  
Olean, New York 14760  
800.282.0130  
Fax: 716.790.7188  
info@ka-bar.com

---

Military and Contracting

**Rocket Sales**

2108 S. FM 113, PO Box 249  
Millsap, TX 76066-2204  
940-682-4501  
Fax: 940-682-4109

---

**KA-BAR®**

200 Homer Street  
Olean, New York 14760  
800.282.0130  
Fax: 716.790.7188  
info@ka-bar.com  
KA-BAR.com



/KABARKNIVES



@KA\_BAR